



VAH

General Notes:

Always replace parts using LRC Coil parts for maximum life from the unit.

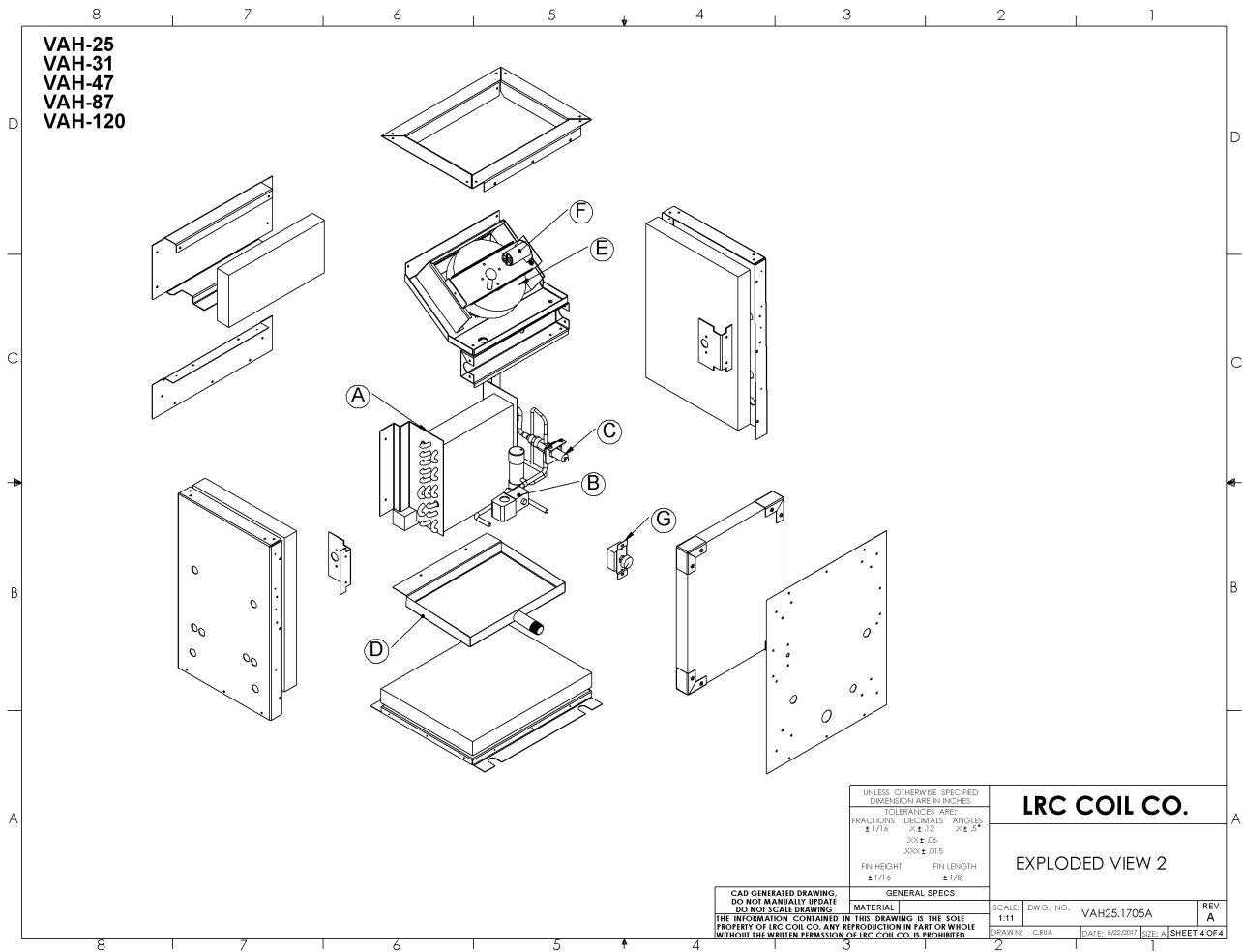
**DISCONNECT POWER BEFORE SERVICING UNIT OR INJURY
MAY RESULT**

Interpreting Serial Numbers

LRC Coil serial numbers are arranged with a unique serial number and date code.

#####-YYMM

- unique serial number
YYMM – Year Month of manufacture



UNLESS OTHERWISE SPECIFIED DIMENSIONS ARE IN INCHES		LRC COIL CO.	
TOLERANCES ARE: FRACTIONS DECIMALS ANGLES ± 1/16 ± .012 ± .5°		EXPLODED VIEW 2	
GENERAL SPECS		SCALE: DWG. NO. VAH25.1705A	REV. A
CAD GENERATED DRAWING. DO NOT MANUALLY UPDATE DO NOT SCALE DRAWINGS		DRAWN: C.RHA	DATE: 02/22/07
MATERIAL		DATE: 02/22/07	SHEET 4 OF 4
THE INFORMATION CONTAINED IN THIS DRAWING IS THE SOLE PROPERTY OF LRC COIL CO. ANY REPRODUCTION IN PART OR WHOLE WITHOUT THE WRITTEN PERMISSION OF LRC COIL CO. IS PROHIBITED.			

Model	Part Description	PN	Comment
VAH-25	A-Coil Assy-includes coil, coating, AXV, LLSV	25495-08	Coil assy is coated, w/ AXV, LLSV, Not coated pre-2009
	B-LLSV-Sol+Valve (120vac coil)	2351 + 2760	Recommended to replace both
	B(optional) -LLSV-Sol+Valve (24vac coil)	2351+3130	Recommended to replace both
	C-AXV	2 Port - 2847	Pre late 2014 – verify config.
		3 Port - 3628	Recommended
	D-Drain Pan	21156-01	Aluminum w/ coating
	E-Inlet Ring	Part of Impeller Kit	Replace as part of set
	F-Impeller	2274-kit	Impeller, ring and capacitor
	G-Speed Ctrl	2953	Up to 2.5A
VAH-31	A-Coil Assy-includes coil, coating, AXV, LLSV	25570-01	Coil assy is coated, w/ AXV, LLSV, Not coated pre-2009
	B-LLSV-Sol+Valve (120vac coil)	2351 + 2760	Recommended to replace both
	B(optional) -LLSV-Sol+Valve (24vac coil)	2351+3130	Recommended to replace both
	C-AXV	2 Port - 2847	Pre late 2014 – verify config.
		3 Port - 3628	Recommended
	D-Drain Pan	20993-00	Aluminum w/ coating
	E-Inlet Ring	Part of Impeller Kit	Replace as part of set
	F-Impeller	2848-kit	Impeller, ring and capacitor
	G-Speed Ctrl	2953	Up to 2.5A

Model	Part Description	PN	Comment
VAH-47	A-Coil Assy-includes coil, coating, AXV, LLSV	25424-10	Coil assy is coated, w/ AXV, LLSV, Not coated pre-2009
	B-LLSV-Sol+Valve (120vac coil)	2351 + 2760	Recommended to replace both
	B(optional) -LLSV-Sol+Valve (24vac coil)	2351+3130	Recommended to replace both
	C-AXV	3 Port - 3628	Recommended
	D-Drain Pan	20993-00	Aluminum w/ coating
	E-Inlet Ring	Part of Impeller Kit	Replace as part of set
	F-Impeller	2848-kit	Impeller, ring and capacitor
	G-Speed Ctrl	2953	2.5 Amp
VAH-66	A-Coil Assy-includes coil, coating, AXV, LLSV	22049-00	Coil assy is coated, w/ AXV, LLSV, Not coated pre-2009
	B-LLSV-Sol+Valve (120vac coil)	2351 + 2760	Recommended to replace both
	B(optional) -LLSV-Sol+Valve (24vac coil)	2351+3130	Recommended to replace both
	C-AXV	3 Port - 3628	Recommended
	D-Drain Pan	20993-00	Aluminum w/ coating
	E-Inlet Ring	Part of Impeller Kit	Replace as part of set
	F-Impeller	2841-kit	Impeller, ring and capacitor
	G-Speed Ctrl	3653	5.0 Amp

Model	Part Description	PN	Comment
VAH-87	A-Coil Assy-includes coil, coating, AXV, LLSV	22049-00	Coil assy is coated, w/ AXV, LLSV, Not coated pre-2009
	B-LLSV-Sol+Valve (120vac coil)	2351 + 2760	Recommended to replace both
	B(optional) -LLSV-Sol+Valve (24vac coil)	2351+3130	Recommended to replace both
	C-AXV	3 Port - 3628	Recommended
	D-Drain Pan	20993-00	Aluminum w/ coating
	E-Inlet Ring	Part of Impeller Kit	Replace as part of set
	F-Impeller	2841-kit	Impeller, ring and capacitor
	G-Speed Ctrl	3653	5.0 Amp
VAH-120	A-Coil Assy-includes coil, coating, AXV, LLSV	25294-00	Coil assy is coated, w/ AXV, LLSV, Not coated pre-2009
	B-LLSV-Sol+Valve (120vac coil)	2351 + 2760	Recommended to replace both
	B(optional) -LLSV-Sol+Valve (24vac coil)	2351+3130	Recommended to replace both
	C-AXV	3 Port - 3628	Recommended
	D-Drain Pan	21221-00	Pre-1/2015, Aluminum w/ coating
		21221-01	Post-1/2015, Aluminum w/ coating
	E-Inlet Ring	Part of Impeller Kit	Replace as part of set
	F-Impeller	2842-kit	Impeller, ring and capacitor
	G-Speed Ctrl	3653	5.0 Amp