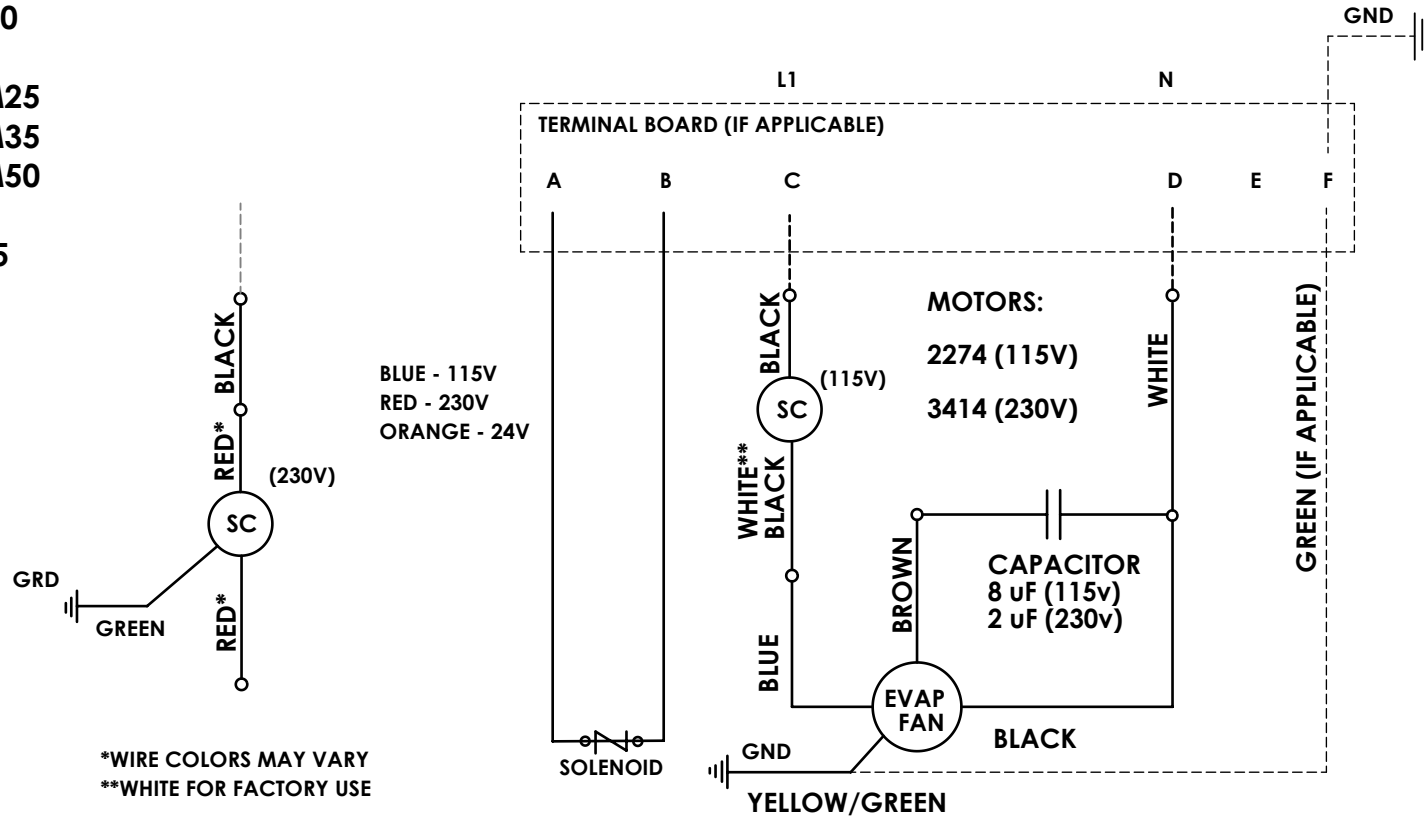


RM25
RM35
RM50

VRM25
VRM35
VRM50

HS25

FACTORY & FIELD WIRING



1. USE COPPER CONDUCTORS ONLY
2. UNIT MUST BE GROUNDED
3. FOR MOTOR AMPS SEE RATING STICKER ON OUTSIDE OF UNIT.

SC= SPEED CONTROL
 FACTORY WIRING ———
 FIELD WIRING - - - - -

REV.	DESCRIPTION	DATE	BY
A	INT. REL.	1/22/19	SV

REVISIONS

INT. REL.	DATE	BY
1/22/19		SV

THE INFORMATION CONTAINED IN THIS DRAWING IS THE SOLE PROPERTY OF VINOTEMP. ANY REPRODUCTION IN PART OR WHOLE WITHOUT THE WRITTEN PERMISSION OF LRC COIL CO. IS PROHIBITED.

UNLESS OTHERWISE SPECIFIED DIMENSIONS ARE IN INCHES TOLERANCES ARE: FRACTIONS DECIMALS ANGLES + .XX+ .XX + 1 .XXX+.XXX		CAD GENERATED DRAWING, DO NOT MANUALLY UPDATE	
APPROVALS		DATE	
DRAWN	GA	12/10/2013	
CHECKED			
MATERIAL		RESP ENG	
FINISH		MFG ENG	
DO NOT SCALE DRAWING		QUAL ENG	

LRC COIL CO.

WIRING DIAGRAM FOR RM 25,35,50 VRM 25,35,50 HS25

SIZE	DWG. NO.	REV.
A	ES-26699-00	A
SCALE	CAD FILE:	SHEET OF
		1 OF 1