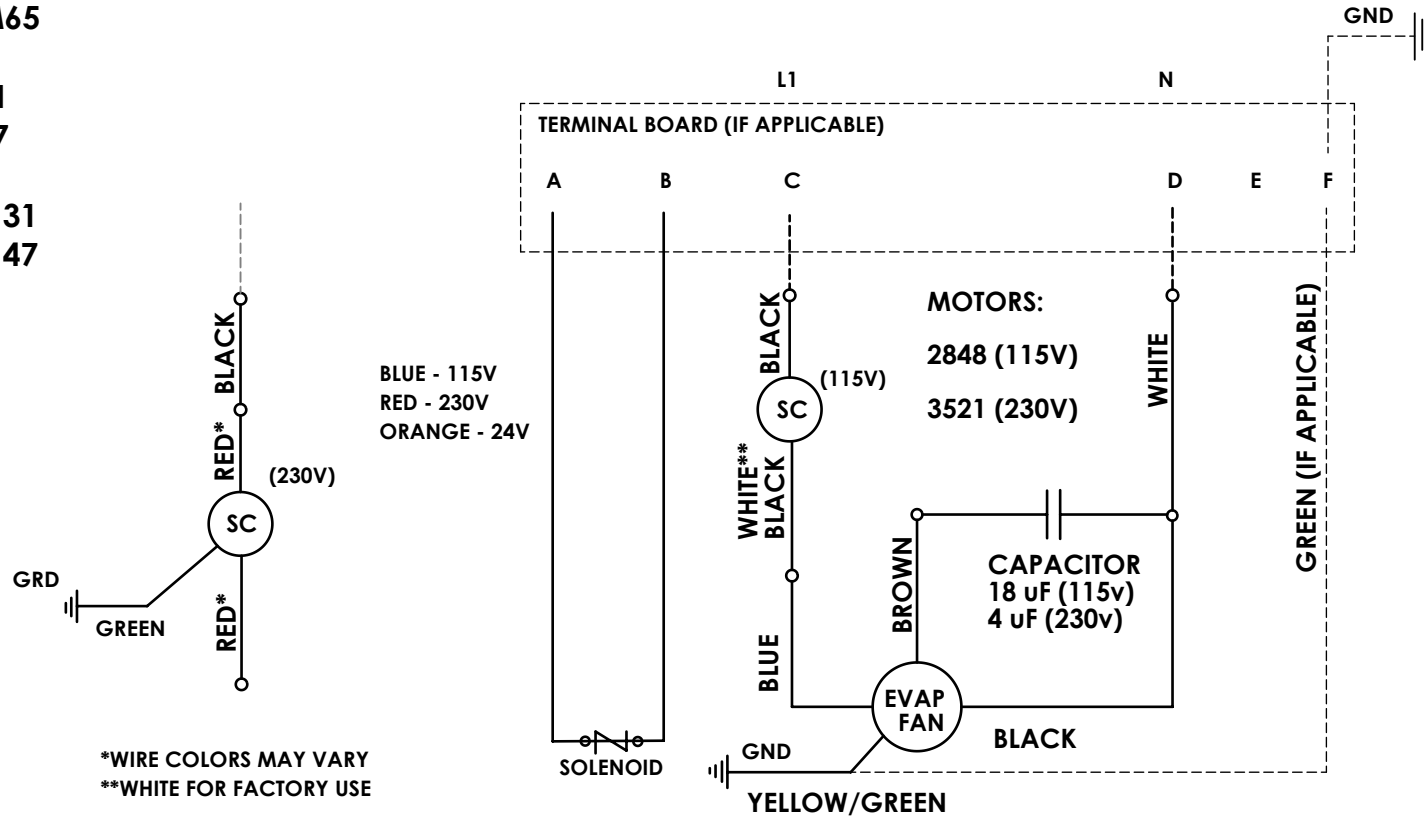


FACTORY & FIELD WIRING

RM65
VRM65
HS31
HS47
VAH31
VAH47



*WIRE COLORS MAY VARY
**WHITE FOR FACTORY USE

1. USE COPPER CONDUCTORS ONLY
2. UNIT MUST BE GROUNDED
3. FOR MOTOR AMPS SEE RATING STICKER ON OUTSIDE OF UNIT.

SC= SPEED CONTROL
FACTORY WIRING —
FIELD WIRING - - - - -

| | | | | | | |
|---|----|---|--------------------------|--|--|--|
| UNLESS OTHERWISE SPECIFIED DIMENSIONS ARE IN INCHES TOLERANCES ARE: FRACTIONS .XX+ .XX + 1 DECIMALS .XXX+.XXX ANGLES | | CAD GENERATED DRAWING, DO NOT MANUALLY UPDATE | | LRC COIL CO. WIRING DIAGRAM FOR : RM65, VRM65 HS31, HS47 VAH31, VAH47 | | |
| | | APPROVALS | DATE | | | |
| DRAWN | GA | 12/10/2013 | | SIZE DWG. NO. REV. A ES-26700-00 A | | |
| CHECKED | | | SCALE CAD FILE: SHEET OF | | | |
| MATERIAL | XX | | | | | |
| FINISH | -- | | | | | |
| DO NOT SCALE DRAWING | | MFG ENG | QUAL ENG | | | |

| A | INT. REL. | 1/22/19 | SV |
|---|-------------|---------|----|
| REV. | DESCRIPTION | DATE | BY |
| REVISIONS | | | |
| THE INFORMATION CONTAINED IN THIS DRAWING IS THE SOLE PROPERTY OF VINOTEMP. ANY REPRODUCTION IN PART OR WHOLE WITHOUT THE WRITTEN PERMISSION OF LRC COIL CO. IS PROHIBITED. | | | |