



HS SPARE PARTS LISTING

General Notes:

Always replace parts using LRC Coil parts for maximum life from the unit.

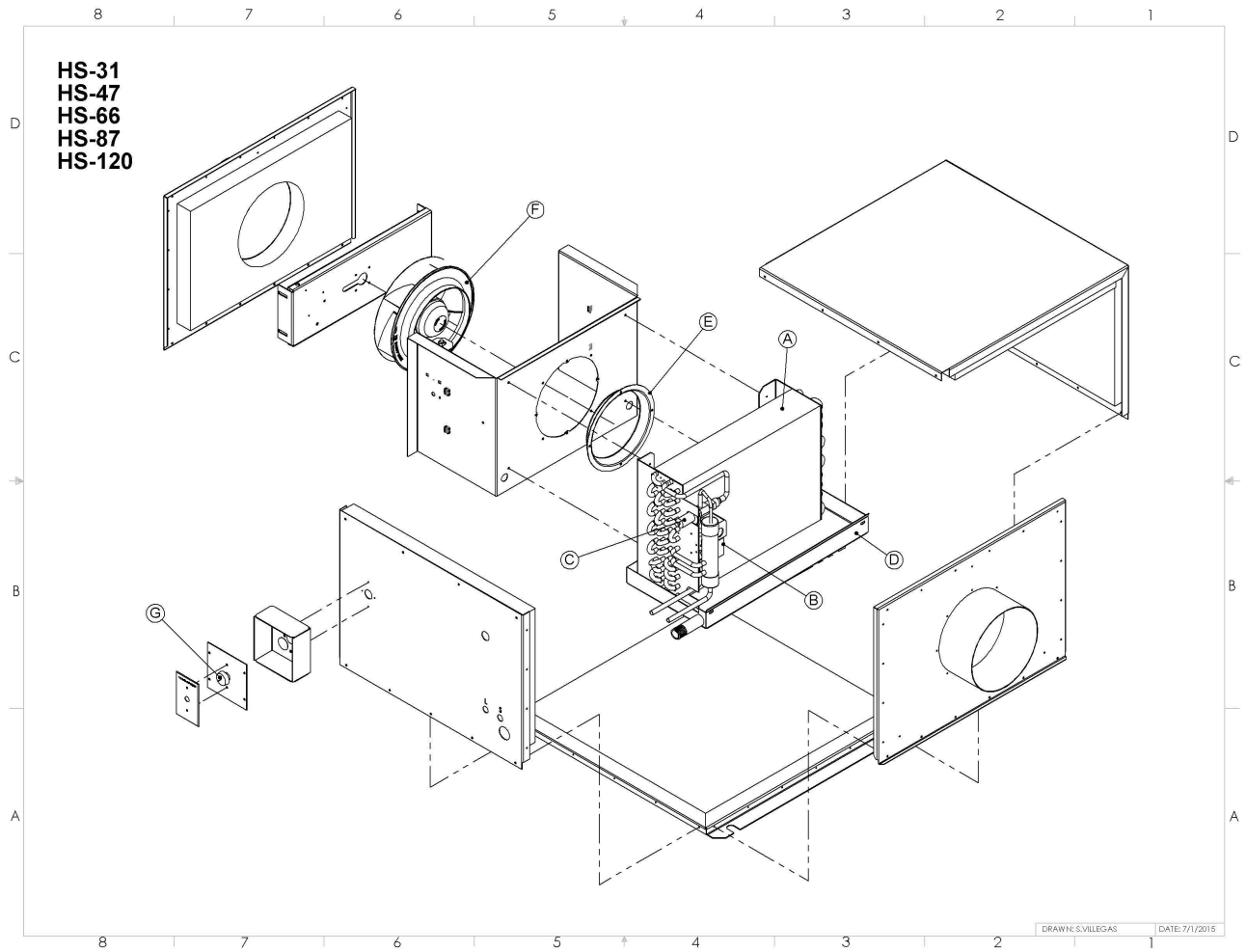
**DISCONNECT POWER BEFORE SERVICING UNIT OR INJURY
MAY RESULT**

Interpreting Serial Numbers

LRC Coil serial numbers are arranged with a unique serial number and date code.

#####-YYMM

- unique serial number
YYMM – Year Month of manufacture



Model	Part Description	PN	Comment
HS-25	A-Coil Assy-includes coil, coating, AXV, LLSV	21143-02	Coil assy is coated, w/ AXV, LLSV, Not coated pre-2009
	B-LLSV-Sol+Valve (120vac coil)	2351 + 2760	Recommended to replace both
	B(optional) -LLSV-Sol+Valve (24vac coil)	2351+3130	Recommended to replace both
	C-AXV	2 Port - 2847	Pre late 2014 – verify config.
		3 Port - 3628	Recommended
	D-Drain Pan	21156-01	Aluminum w/ coating
	E-Inlet Ring	Part of Impeller Kit	Replace as part of set
	F-Impeller	2274-kit (120V, PSC) 3414-kit (230V, PSC) 4074 (120V, ECM)	Impeller, ring and capacitor
	G-Speed Ctrl	2953 (120V) 3653 (230V)	2.5 Amp (do not use on EC models)
HS-31	A-Coil Assy-includes coil, coating, AXV, LLSV	25465-100	Coil assy is coated, w/ AXV, LLSV, Not coated pre-2009
	B-LLSV-Sol+Valve (120vac coil)	2351 + 2760	Recommended to replace both
	B(optional) -LLSV-Sol+Valve (24vac coil)	2351+3130	Recommended to replace both
	C-AXV	2 Port - 2847	Pre late 2014 – verify config.
		3 Port - 3628	Recommended
	D-Drain Pan	20993-00	Aluminum w/ coating
	E-Inlet Ring	Part of Impeller Kit	Replace as part of set
	F-Impeller	2848-kit (120V, PSC) 3414-kit (230V, PSC) 4074 (120V, ECM)	Impeller, ring and capacitor
	G-Speed Ctrl	2953 (120V) 3653 (230V)	2.5 Amp (do not use on EC models)

Model	Part Description	PN	Comment
HS-47	A-Coil Assy-includes coil, coating, AXV, LLSV	25466-00	Coil assy is coated, w/ AXV, LLSV, Not coated pre-2009
	B-LLSV-Sol+Valve (120vac coil)	2351 + 2760	Recommended to replace both
	B(optional) -LLSV-Sol+Valve (24vac coil)	2351+3130	Recommended to replace both
	C-AXV	3 Port - 3628	Recommended
	D-Drain Pan	20993-00	Aluminum w/ coating
	E-Inlet Ring	Part of Impeller Kit	Replace as part of set
	F-Impeller	2848-kit (120V, PSC) 3414-kit (230V, PSC) 4074 (120V, ECM)	Impeller, ring and capacitor
	G-Speed Ctrl	2953 (120V) 3653 (230V)	2.5 Amp (do not use on EC models)
HS-66	A-Coil Assy-includes coil, coating, AXV, LLSV	21205-01	Coil assy is coated, w/ AXV, LLSV, Not coated pre-2009
	B-LLSV-Sol+Valve (120vac coil)	2351 + 2760	Recommended to replace both
	B(optional) -LLSV-Sol+Valve (24vac coil)	2351+3130	Recommended to replace both
	C-AXV	3 Port - 3628	Recommended
	D-Drain Pan	20992-00	Aluminum w/ coating
	E-Inlet Ring	Part of Impeller Kit	Replace as part of set
	F-Impeller	2841-kit (120V, PSC) 3744- kit (230V, PSC) 4075-kit (120V, ECM)	Impeller, ring and capacitor
	G-Speed Ctrl	3653 (120 V) 3694 (230V)	5.0 Amp (do not use on EC models)

Model	Part Description	PN	Comment
HS-87	A-Coil Assy-includes coil, coating, AXV, LLSV	21206-01	Coil assy is coated, w/ AXV, LLSV, Not coated pre-2009
	B-LLSV-Sol+Valve (120vac coil)	2351 + 2760	Recommended to replace both
	B(optional) -LLSV-Sol+Valve (24vac coil)	2351+3130	Recommended to replace both
	C-AXV	3 Port - 3628	Recommended
	D-Drain Pan	20992-00	Aluminum w/ coating
	E-Inlet Ring	Part of Impeller Kit	Replace as part of set
	F-Impeller	2841-kit	Impeller, ring and capacitor
	G-Speed Ctrl	3653	5.0 Amp
HS-120	A-Coil Assy-includes coil, coating, AXV, LLSV	21189-00 (pre 2011 – 22” tall) 21189-03 (2011 and later – 23” tall)	Coil assy is coated, w/ AXV, LLSV, Not coated pre-2009, verify coil height
	B-LLSV-Sol+Valve (120vac coil)	2351 + 2760	Recommended to replace both
	B(optional) -LLSV-Sol+Valve (24vac coil)	2351+3130	Recommended to replace both
	C-AXV	3 Port - 3628	Recommended
	D-Drain Pan	21221-00	Pre-1/2015, Aluminum w/ coating
		21200-01	Post-1/2015, Aluminum w/ coating
	E-Inlet Ring	Part of Impeller Kit	Replace as part of set
	F-Impeller	2842-kit (120V) 4076-kit (120V ECM)	Impeller, ring and capacitor
	G-Speed Ctrl	3653	5.0 Amp

HS-180EC	A-Coil Assy-includes coil, coating, AXV, LLSV		Coil assy is coated, w/ AXV, LLSV,
	B-LLSV-Sol+Valve (120vac coil)	2351 + 2760	Recommended to replace both
	B(optional) -LLSV-Sol+Valve (24vac coil)	2351+3130	Recommended to replace both
	C-AXV	3 Port - 3628	Recommended
	D-Drain Pan	TBD	Stainless Steel
	E-Inlet Ring	Part of Impeller Kit	Replace as part of set
	F-Impeller	4116-kit (230V ECM)	Impeller, ring and capacitor
	G-Speed Ctrl	N/A	Not used