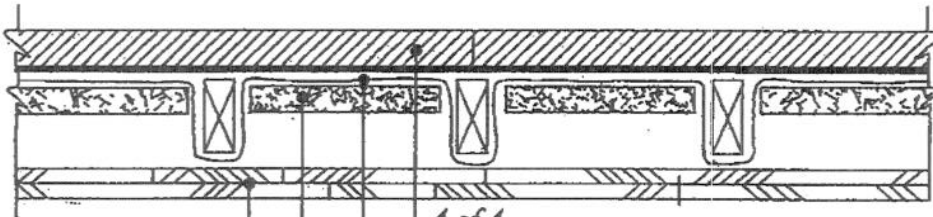


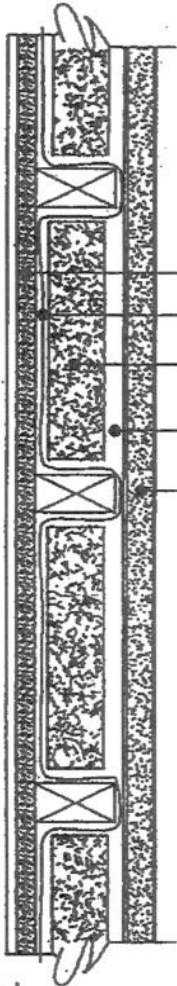
WINE CELLAR ROOM PREPARATION

CEILING SECTION



4 of 4
EXISTING FLOOR ABOVE

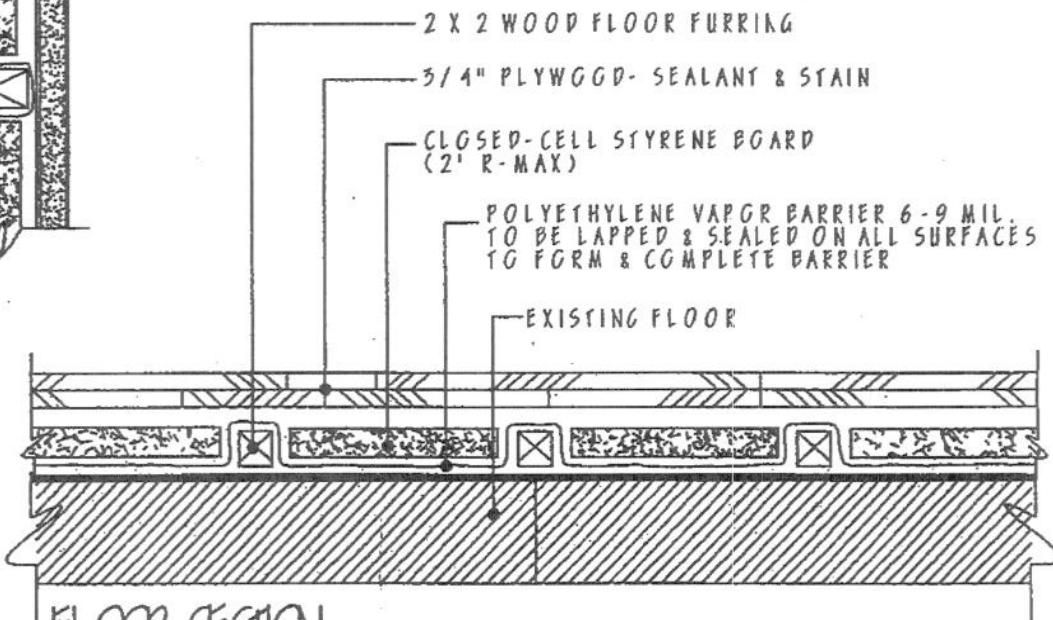
POLYETHYLENE VAPOR OR BARRIER, 6-8 MIL.
CLOSED-CELL STYRENE BOARD FOR
INTERIOR WALLS (WITH 2 X 4 STUDS);
R-FACTOR -30+ / 1" (3" R-MAX-R-21*)
GREENBOARD-INTERIOR QUALITY



EXISTING WALL
POLYETHYLENE VAPOR OR BARRIER, 6-8 MIL.
CLOSED CELL STYRENE BOARD
R-FACTOR -19+ / 1" (3" R-MAX)
1/2" AIR SPACE
GREENBOARD-INTERIOR QUALITY

*NOTE: DOOR-INSULATED STEEL WITH-8 TO 15 OR
SOLID CORE DOOR. DOORS MUST BE WEATHER STRIPPED WITH DOOR SWEEP.

WALL SECTION



2 X 2 WOOD FLOOR FURRING
3/4" PLYWOOD- SEALANT & STAIN
CLOSED-CELL STYRENE BOARD
(2" R-MAX)

POLYETHYLENE VAPOR BARRIER 6-9 MIL.
TO BE LAPPED & SEALED ON ALL SURFACES
TO FORM A COMPLETE BARRIER

EXISTING FLOOR

FLOOR SECTION