



VAH

General Notes:

Always replace parts using LRC Coil parts for maximum life from the unit.

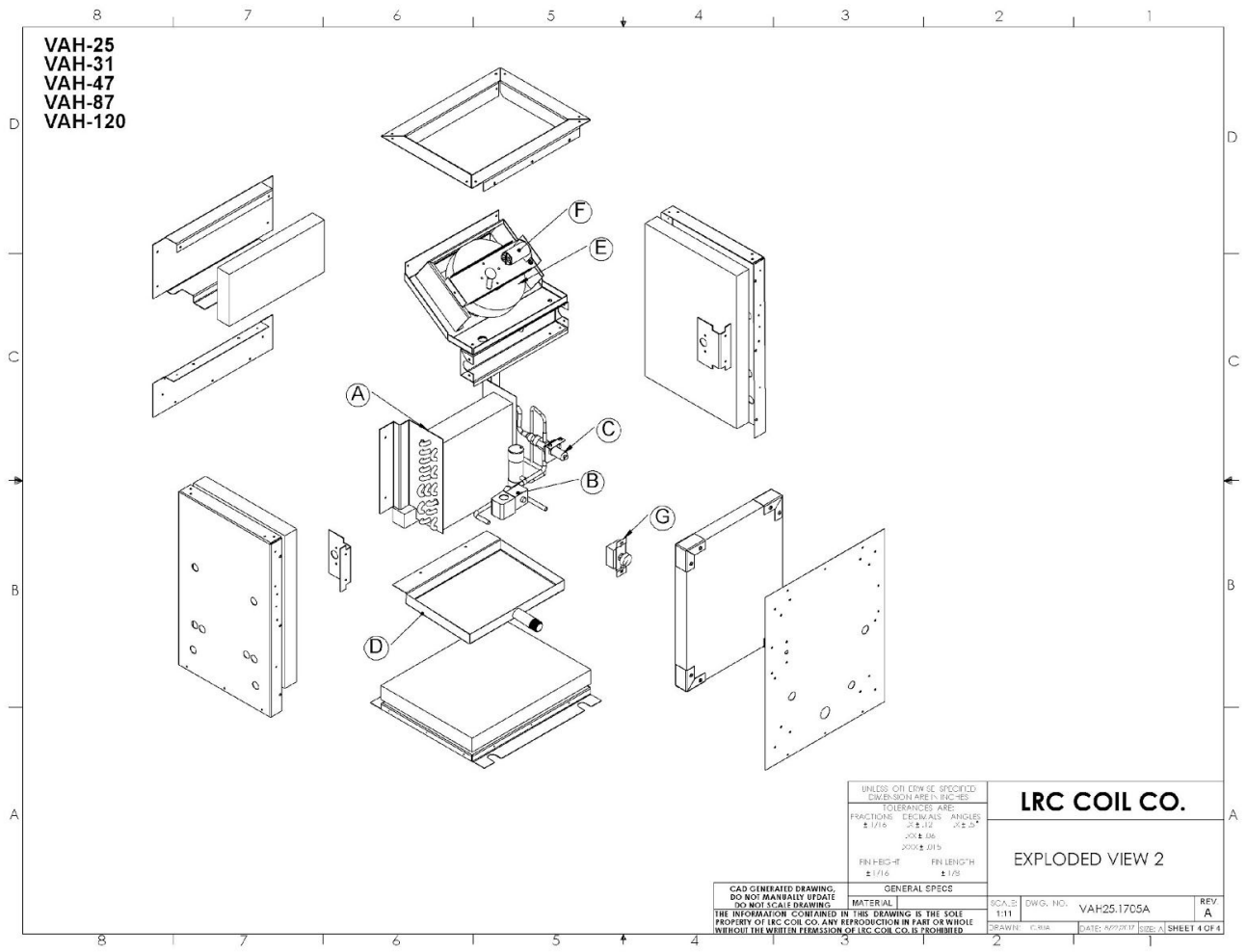
**DISCONNECT POWER BEFORE SERVICING UNIT OR INJURY
MAY RESULT**

Interpreting Serial Numbers

LRC Coil serial numbers are arranged with a unique serial number and date code.

#####-YYMM

- unique serial number
YYMM – Year Month of manufacture



Model	Part Description	PN	Comment
VAH-25	A-Coil Assy-includes coil, coating, AXV, LLSV	25495-08 26844-10 (EC)	Coil assy is coated, w/ AXV, LLSV, Not coated pre-2009
	B-LLSV-Sol+Valve (120vac coil)	2351 + 2760	Recommended to replace both
	B(optional)-LLSV-Sol+Valve (24vac coil)	2351+3130	Recommended to replace both
	C-AXV	2 Port - 2847	Pre late 2014 – verify config.
		3 Port - 3628	Recommended
	D-Drain Pan	25495-28 26844-07 (EC)	Stainless Steel
	E-Inlet Ring	Part of Impeller Kit	Replace as part of set
	F-Impeller	2274-kit 4074 (EC)	Impeller, ring and capacitor no capacitor for EC
	G-Speed Ctrl	2953	Up to 2.5A do not use for EC
VAH-31	A-Coil Assy-includes coil, coating, AXV, LLSV	25570-01 26638-10 (EC)	Coil assy is coated, w/ AXV, LLSV, Not coated pre-2009
	B-LLSV-Sol+Valve (120vac coil)	2351 + 2760	Recommended to replace both
	B(optional)-LLSV-Sol+Valve (24vac coil)	2351+3130	Recommended to replace both
	C-AXV	2 Port - 2847	Pre late 2014 – verify config.
		3 Port - 3628	Recommended
	D-Drain Pan	25570-31 26638-07 (EC)	Stainless Steel
	E-Inlet Ring	Part of Impeller Kit	Replace as part of set
	F-Impeller	2848-kit 4074 (EC)	Impeller, ring and capacitor no capacitor for EC
	G-Speed Ctrl	2953	Up to 2.5A do not use for EC

Model	Part Description	PN	Comment
VAH-47	A-Coil Assy-includes coil, coating, AXV, LLSV	25424-10 26770-10 (EC)	Coil assy is coated, w/ AXV, LLSV, Not coated pre-2009
	B-LLSV-Sol+Valve (120vac coil)	2351 + 2760	Recommended to replace both
	B(optional) -LLSV-Sol+Valve (24vac coil)	2351+3130	Recommended to replace both
	C-AXV	3 Port - 3628	Recommended
	D-Drain Pan	25423-17 26770-17 (EC)	stainless steel
	E-Inlet Ring	Part of Impeller Kit	Replace as part of set
	F-Impeller	2848-kit 4074 (EC)	Impeller, ring and capacitor no capacitor for EC
	G-Speed Ctrl	2953	2.5 Amp do not use for EC
VAH-66/ 87	A-Coil Assy-includes coil, coating, AXV, LLSV	22049-00 26629-30 (EC)	Coil assy is coated, w/ AXV, LLSV, Not coated pre-2009
	B-LLSV-Sol+Valve (120vac coil)	2351 + 2760	Recommended to replace both
	B(optional) -LLSV-Sol+Valve (24vac coil)	2351+3130	Recommended to replace both
	C-AXV	3 Port - 3628	Recommended
	D-Drain Pan	22049-39 26629-31 (EC)	stainless steel
	E-Inlet Ring	Part of Impeller Kit	Replace as part of set
	F-Impeller	2841-kit 4075 (EC)	Impeller, ring and capacitor no cap for EC
	G-Speed Ctrl	3653	5.0 Amp do not use for EC

VAH-120	A-Coil Assy-includes coil, coating, AXV, LLSV	25294-00 25294-30 (EC)	Coil assy is coated, w/ AXV, LLSV, Not coated pre-2009
	B-LLSV-Sol+Valve (120vac coil)	2351 + 2760	Recommended to replace both
	B(optional) -LLSV-Sol+Valve (24vac coil)	2351+3130	Recommended to replace both
	C-AXV	3 Port - 3628	Recommended
	D-Drain Pan	21221-00	Pre-1/2015, Aluminum w/ coating
		21221-01	Post-1/2015, Aluminum w/ coating
		25295-09 (EC)	stainless steel
	E-Inlet Ring	Part of Impeller Kit	Replace as part of set
	F-Impeller	2842-kit 4076 (EC)	Impeller, ring and capacitor no cap for EC
	G-Speed Ctrl	3653	5.0 Amp do not use on EC

VAH-180 EC	A-Coil Assy-includes coil, coating, AXV, LLSV	26474-30	Coil assy is coated, w/ AXV, LLSV,
	B-LLSV-Sol+Valve (120vac coil)	2351 + 2760 or 2761 (230v)	Recommended to replace both
	B(optional) -LLSV-Sol+Valve (24vac coil)	2351+3130	Recommended to replace both
	C-AXV	3 Port - 3628	Recommended
	D-Drain Pan	26474-37	stainless steel
	E-Inlet Ring	n/a	
	F-Impeller	4116	
	G-Speed Ctrl	n/a	do not use on EC

