

RM-EC SERIES

Technical Brochure

Revision date: 200306

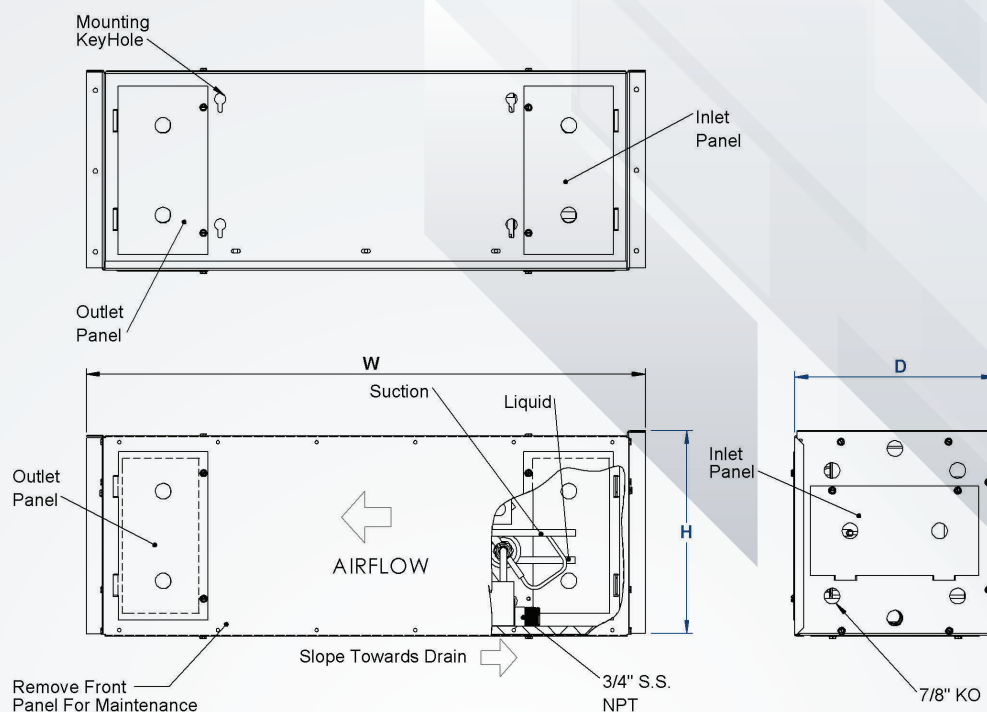


PRODUCT OVERVIEW

Rack Mount Evaporator EC (RM-EC) comes standard with an energy-efficient motor that is Title 24 compliant and is made for small to medium-size rooms. It is designed to fit perfectly flush with a standard bottle rack system. The RM-EC is made with multiple access panels to customize the position of the air exhaust and intake. The RM-EC comes with a potentiometer to control CFM. Made to control temperature and humidity for a variety of specialty products.

- In-room split system unit
- The unit comes standard with a universal AXV Valve and a Liquid Line Solenoid Valve for easy pump down installation
- Coil coated with a non-toxic water-based epoxy-coating
- 230 volt available upon request
- Available in flat black powder coating
- Stainless Steel drain pan with a $\frac{3}{4}$ " NPT

RM-EC SERIES



SPECIFICATIONS:

MODEL NUMBER	CAPACITY/BTUH @ A 17° TD, 38° SST, EAT 55°				MOTOR			CONNECTIONS		DIMENSIONS			APPRX SHIP WT. (LBS)
	R-22	R-134A	R-404A	R-448A	QTY	AMPS	CFM	LIQUID	SUCTION	H	W	D	
RM-25EC													
	2354	2572	2633	2789	1	1.25	220	3/8	3/8	11 1/2	31 3/16	11 1/4	26
RM-35EC													
	3543	3228	3478	3523	1	1.25	260	3/8	3/8	11 1/2	37	11 1/4	29
RM-50EC													
	4996	4550	4723	4823	1	1.25	335	3/8	5/8	14 1/4	37 15/16	11 1/4	35
RM-65EC													
	6629	6500	6603	6503	1	1.25	420	3/8	5/8	14 1/2	37 15/16	11 1/4	39

Santa Fe Springs, CA
Office: 562.944.1969
Fax: 562.944.4979

