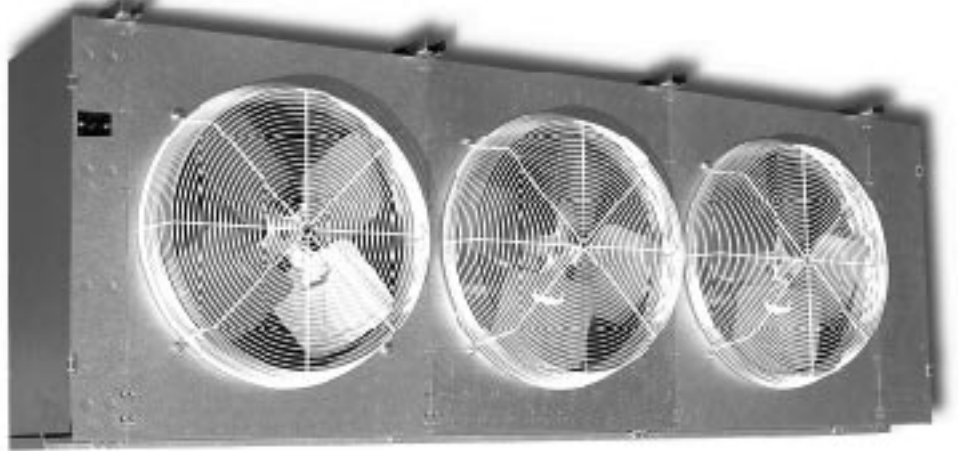


High Velocity Unit Cooler

16,958 to 289,460 BTUH Capacity

Manufactured for large walk-in coolers, freezers, or blast freezers, LRC's Super Power Cooler ("SPC") Unit Coolers are designed for applications below 30°F, or for rooms requiring medium to high temperatures. LRC has many "SPC" units, ranging in capacity from 16,958 BTUH to 289,460 BTUH, and can be used with R-22, R-404A, R407, R410, R-502, R-507, or other refrigerants. Available in air, hot gas, or electric defrost models, LRC's "SPC" units are the right choice for large scale cooler/freezer projects.



- Powerful all-aluminum fans provide long air throw for large room applications
- Fans and fan blades are individually balanced to reduce vibration and noise
- Durable, rustproof aluminum cabinet standard. Stainless steel cabinets, or epoxy, polyester, or phenolic coatings are available for additional corrosion protection
- High performance 3/4 hp, 1075 RPM motors using available 208/230/1Ø, 208/230/3Ø, 460/1Ø, or 460/3Ø power
- Low temperature motors for blast cooling and freezing room temperatures below -30°F
- Easily accessible electrical panel and electrical connections pre-wired to screw type terminal blocks makes wiring simple
- Slotted hangers make installation fast and easy
- Designed for direct expansion R-22, R-12, R-404A, R-502, R-507 or other refrigerants. Specify refrigerant when ordering

- Ample space is provided for expansion valve(s) and refrigerant connections
- High performance staggered coils, with tubing mechanically expanded into aluminum collared fins
- Air defrost units – recommended for coolers at or above +35°F. Available in 4, 6 or 8 FPI units. Contact factory for custom configurations
- Hot Gas units with reverse cycle defrost are available for rooms below +35°F. Includes an adjustable defrost termination/fan delay control so defrost can be set for specific applications.
- Electrical defrost is available for rooms below +35°F. Heaters(s) in the center of the coil provide a rapid and even defrost pattern. An adjustable defrost termination/fan delay control is included so defrost can be set for specific applications.
- ETL certified

Options Available – Call for details

- Custom circuiting for Glycol applications available

- Energy efficient motors can be ordered to reduce power consumption
- Copper or coated aluminum fins are available for additional corrosion resistance
- Air throw collars provide efficient air movement for extra large rooms
- Insulated drain pans
- Low velocity or ultra-high velocity fans can be ordered for speciality applications
- OEM or customized units are available. Call for details

Product Number Designation Example

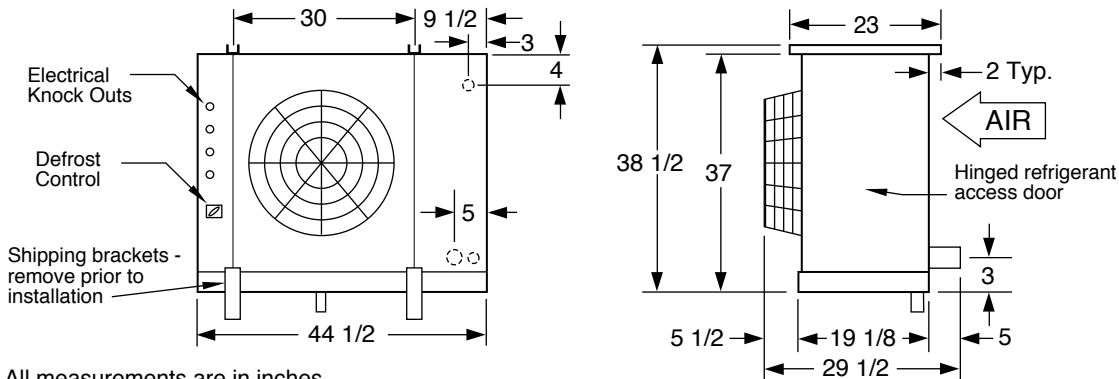
SPC*46-929 =
 SPC = Super Power cooler
 * = A (Air defrost), E (Electric defrost), or H (Hot Gas defrost)
 4 = Number of fans
 6 = Fins per inch
 -929 = BTUH's at -20°F ST (freezer units) or BTUH's at +25°F ST/10°F TD (cooler units)



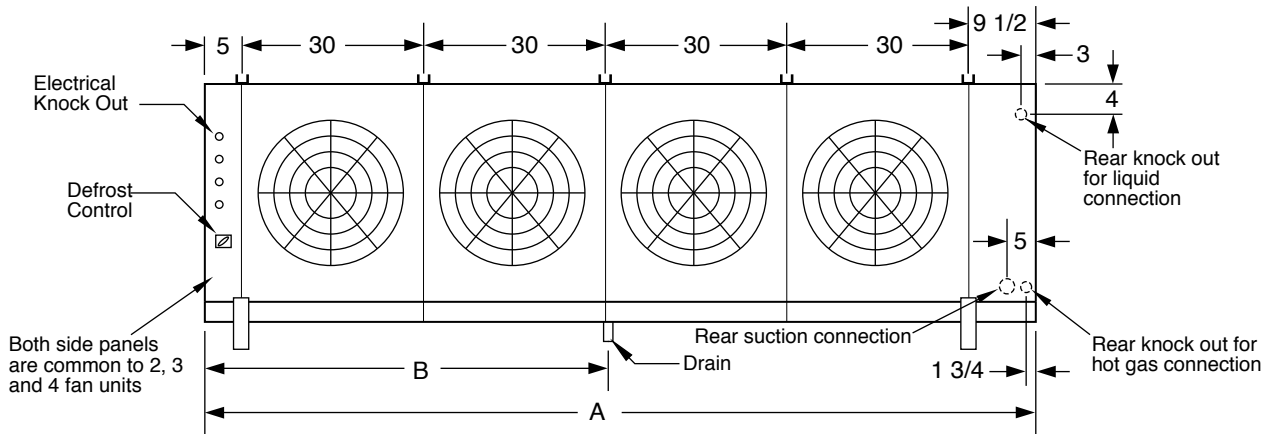
At LRC, we are continuously working to improve our products, therefore, we reserve the right to make changes without notice.

© LRC Coil Company 2003

Large Cooler Units



All measurements are in inches
Refrigeration connections are on the air inlet side of the unit



Super Power Cool Unit Physical Data - Large Capacity

# Fans	Motor Amps				Air Throw (Ft)		Dimensions (In)		# of Hangers
	208/230 1Ø	208/230 3Ø	460 1Ø	460 3Ø	W/out Collar	W/Collar	A	B	
1	4.8	2.8	2.4	1.4	70 - 90	80 - 100	44 1/2	22 1/4	2
2	9.6	5.5	4.8	2.8			74 1/2	37 1/4	3
3	14.4	8.3	7.2	4.2			104 1/2	52 1/4	4
4	19.2	11.1	9.6	5.5			134 1/2	67 1/4	5

Fan diameter is 24"; Fan horsepower is 3/4 hp.
Air throw data is based on 30 ft. ceiling height with no obstructions, and applies to electric and hot gas defrost models only.
Hanger channels are 1/2" x 1 1/2", with a 1 1/8" (typ) slot.

Model #	# Fans	Electrical Defrost Amps						WATTS
		208 1Ø	208 3Ø	230 1Ø	230 3Ø	460 1Ø	460 3Ø	
SPCE14-191	1	16.5	9.5	18.3	10.5	9.1	5.3	4,200
SPCE14-243	1	22.0	14.3	24.3	15.8	12.2	8.1	5,600
SPCE24-388	2	33.0	19.1	36.5	21.1	18.3	10.5	8,400
SPCE24-496	2	44.0	28.6	48.7	31.6	24.3	16.1	11,200
SPCE34-563	3	43.1	24.9	47.7	27.5	23.9	13.8	10,974
SPCE34-750	3	57.5	37.3	63.6	41.3	31.8	21.0	14,632
SPCE44-909	4	56.4	32.5	62.3	36.0	31.2	18.0	14,334
SPCE44-1025	4	75.1	48.8	83.1	54.0	41.5	27.5	19,112
6 FPI								
SPCE16-236	1	16.5	9.5	18.3	10.5	9.1	5.3	4,200
SPCE16-271	1	22.0	14.3	24.3	15.8	12.2	8.1	5,600
SPCE26-451	2	33.0	19.1	36.5	21.1	18.3	10.5	8,400
SPCE26-557	2	44.0	28.6	48.7	31.6	24.3	16.1	11,200
SPCE36-657	3	43.1	24.9	47.7	27.5	23.9	13.8	10,974
SPCE36-887	3	57.5	37.3	63.6	41.3	31.8	21.0	14,632
SPCE46-929	4	56.4	32.5	62.3	36.0	31.2	18.0	14,334
SPCE46-1186	4	75.1	48.8	83.1	54.0	41.5	27.5	19,112

Visit www.lrccoil.com for installation and maintenance data, and wiring diagrams.

OUR UNCONDITIONAL GUARANTEE

We're proud of the workmanship that goes into every LRC product. Because of our exacting design and manufacturing standards, and our thorough testing prior to shipping, we unconditionally guarantee our products to be free from manufacturing defects for one year. You can count on LRC Coil for quality heat transfer products.

Large Cooler Units – Air Defrost

6 Fins per Inch

Model #	Fan Data		Refrig. Connection			BTUH Capacity @ 25°F ST (R22, R404A)		Unit Weight (lbs)
	Qty	CFM	Liquid	Suction	Drain FPT	10°F TD	12°F TD	
SPCA16-237	1	6,150	5/8 OD	1 1/8	3/4	23,721	28,465	160
SPCA16-316	1	6,000	5/8 OD	1 1/8	3/4	31,681	38,017	183
SPCA26-484	2	12,300	7/8 OD	1 3/8	3/4	48,472	58,166	274
SPCA26-637	2	12,000	1 1/8 OD	1 3/8	3/4	63,762	76,514	325
SPCA36-713	3	18,450	1 1/8 OD	1 3/8	1 1/4	71,310	85,572	380
SPCA36-948	3	17,430	1 1/8 OD	1 5/8	1 1/4	94,892	113,870	450
SPCA46-998	4	25,200	1 3/8 OD	1 5/8	1 1/4	99,895	119,874	482
SPCA46-1248	4	24,320	1 3/8 OD	1 5/8	1 1/4	125,892	151,070	579

LRC's Application Engineers can help you design the system you need. Call us today, 562-944-1969, and we'll help you get the right LRC product for your project.

8 Fins per Inch

Model #	Fan Data		Refrig. Connection			BTUH Capacity @ 25°F ST (R22, R404A)		Unit Weight (lbs)
	Qty	CFM	Liquid	Suction	Drain FPT	10°F TD	12°F TD	
SPCA18-263	1	5,900	5/8 OD	1 1/8	3/4	26,376	31,651	167
SPCA18-340	1	5,800	5/8 OD	1 1/8	3/4	34,065	40,878	196
SPCA28-512	2	11,950	7/8 OD	1 3/8	3/4	51,200	61,440	291
SPCA28-630	2	11,700	1 1/8 OD	1 3/8	3/4	63,030	75,636	348
SPCA38-813	3	18,450	1 1/8 OD	1 5/8	1 1/4	81,300	97,560	404
SPCA38-929	3	17,100	1 3/8 OD	1 5/8	1 1/4	92,395	110,874	481
SPCA48-1121	4	24,890	1 3/8 OD	1 5/8	1 1/4	112,100	134,520	518
SPCA48-1394	4	22,950	1 3/8 OD	2 1/8	1 1/4	139,466	167,359	626

For 4 FPI units, consult factory

External equalizer is 1/4" diameter

Available with factory installed TXV, solenoid valves, and check valves - call for details.

Connection sizes based on the following – Cooler units = +25°F ST, 10°F TD, R22

For special applications, connection sizes/quantity may vary – call LRC for more information.

Large Freezer Units – Electric/Hot Gas Defrost

4 Fins per Inch

Model #	Fan Data		Refrig. Connection			BTUH Capacity @ 10°F TD (R22, R404A)			Unit Wt. (lbs)
	Qty	CFM	Liquid	Suction	Drain FPT	-30°F ST	-20°F ST	-10°F ST	
SPC*14-191	1	5,785	5/8 OD	1 1/8	3/4	16,958	19,183	19,950	168
SPC*14-243	1	5,685	7/8 OD	1 3/8	3/4	21,516	24,339	25,313	191
SPC*24-388	2	11,670	1 1/8 OD	1 3/8	3/4	34,335	38,841	40,395	281
SPC*24-496	2	11,370	1 3/8 OD	1 5/8	3/4	43,931	49,696	51,684	328
SPC*34-563	3	17,800	1 3/8 OD	1 5/8	1 1/4	49,856	56,398	58,654	393
SPC*34-750	3	17,050	1 3/8 OD	2 1/8	1 1/4	66,357	75,064	78,067	461
SPC*44-909	4	21,800	1 3/8 OD	2 1/8	1 1/4	80,439	90,994	94,634	532
SPC*44-1025	4	21,700	1 3/8 OD	2 1/8	1 1/4	90,669	102,567	106,670	576

6 Fins per Inch

Model #	Fan Data		Refrig. Connection			BTUH Capacity @ 10°F TD (R22, R404A)			Unit Wt. (lbs)
	Qty	CFM	Liquid	Suction	Drain FPT	-30°F ST	-20°F ST	-10°F ST	
SPC*16-236	1	5,665	5/8 OD	1 1/8	3/4	20,878	23,618	24,563	162
SPC*16-271	1	5,468	7/8 OD	1 3/8	3/4	24,028	27,181	28,268	196
SPC*26-451	2	11,330	1 1/8 OD	1 5/8	3/4	39,916	45,154	46,960	286
SPC*26-557	2	10,936	1 3/8 OD	1 5/8	3/4	49,292	55,760	57,990	335
SPC*36-657	3	16,995	1 3/8 OD	2 1/8	1 1/4	58,136	65,765	68,396	400
SPC*36-887	3	16,350	1 3/8 OD	2 1/8	1 1/4	78,462	88,758	92,308	472
SPC*46-929	4	22,660	1 3/8 OD	2 1/8	1 1/4	82,156	92,937	96,654	496
SPC*46-1186	4	21,800	(2) 1 3/8 OD	(2) 2 1/8	1 1/4	104,867	118,628	123,373	594

Replace "*" with either E (for electric defrost) or H (for hot gas defrost) when ordering

Hot Gas Connection – 1, 2, and 3 fans = 7/8", 4 fans = 1 1/8"

External equalizer is 1/4" diameter

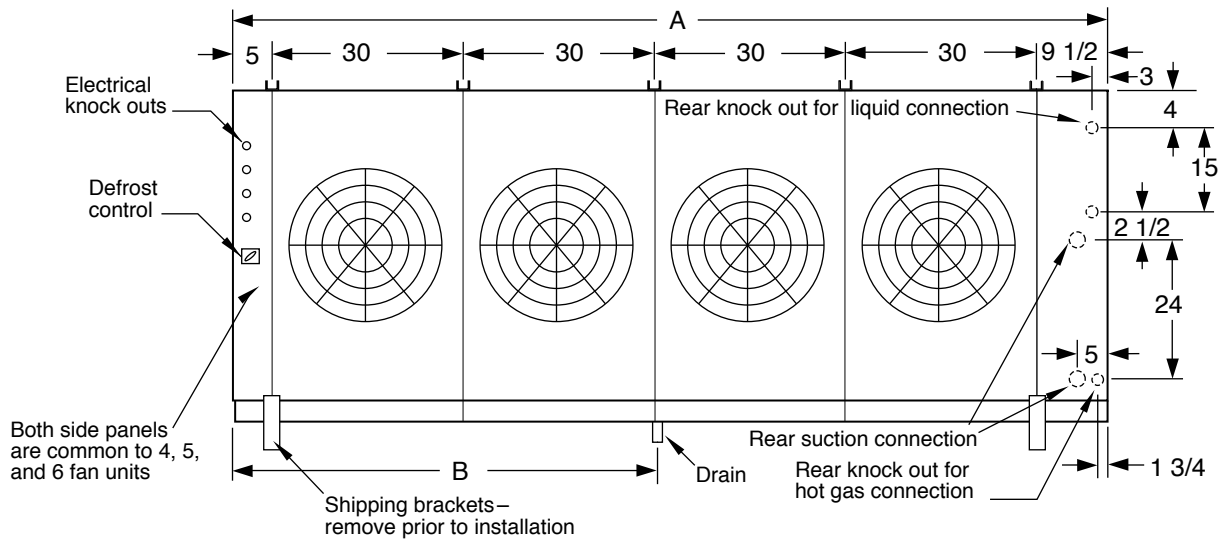
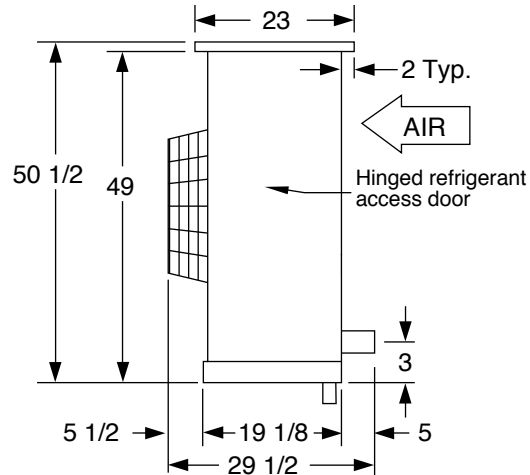
Available with factory installed TXV, solenoid valves, and check valves - call for details.

Connection sizes based on the following – Freezer units = -20°F ST, 10°F TD, R404A

For special applications, connection sizes/quantity may vary – call LRC for more information.

Jumbo Cooler Units

All measurements are in inches
Refrigeration connections are on
the air inlet side of the unit



Super Power Cool Unit Physical Data – Jumbo Capacity

# Fans	Motor Amps				Air Throw (Ft)		Dimensions (In)		# of Hangers
	208/230 1Ø	208/230 3Ø	460 1Ø	460 3Ø	W/out Collar	W/Collar	A	B	
4	19.2	11.1	9.6	5.5	70 - 90	80 - 100	134 1/2	67 1/4	5
5	24.0	13.9	12.0	6.9			164 1/2	82 1/4	6
6	28.8	16.6	14.4	8.3			194 1/2	97 1/4	7

Fan diameter is 24", Fan horsepower is 3/4 hp.
Air throw data is based on 30 ft. ceiling height with no obstructions, and applies to electric and hot gas defrost models only.
Hanger channels are 1/2" x 1 1/2", with a 1 1/8" (typ) slot.

Model #	# Fans	Electrical Defrost Amps						WATTS	
		4 FPI	208 1Ø	208 3Ø	230 1Ø	230 3Ø	460 1Ø		460 3Ø
SPCE44-1359	4		113.2	68.9	125.2	76.2	62.6	43.4	28,800
SPCE54-1482	5		112.0	72.7	123.8	80.4	61.9	41.0	28,480
SPCE54-1693	5		140.0	85.2	154.8	94.2	77.4	53.6	35,600
SPCE64-1990	6		166.7	101.4	184.3	112.1	92.2	63.9	42,400
		6 FPI							
SPCE46-1339	4		90.6	58.9	100.2	65.1	50.1	33.1	23,040
SPCE46-1468	4		113.2	68.9	125.2	76.2	62.6	43.4	28,800
SPCE56-1724	5		112.0	72.7	123.8	80.4	61.9	41.0	28,480
SPCE56-1963	5		140.0	85.2	154.8	94.2	77.4	53.6	35,600
SPCE66-2291	6		166.7	101.4	184.3	112.1	92.2	63.9	42,400

Our Application Engineers can help you design the system you need. Call us today, 562-944-1969, and we'll help you get the right LRC product for your project.

Jumbo Cooler Units – Air Defrost

6 Fins per Inch

Model #	Fan Data		Refrig. Connection			BTUH Capacity @		Unit Weight (lbs)
	Qty	CFM	Liquid	Suction	Drain FPT	25°F ST (R22, R404A)	10°F TD	
SPCA46-1624	4	28,000	1 3/8 OD	2 1/8	1 1/4	162,400	194,880	703
SPCA56-1788	5	35,000	1 5/8 OD	2 1/8	1 1/4	178,813	214,576	779
SPCA66-2073	6	40,000	1 5/8 OD	2 1/8	1 1/4	207,304	248,765	914

8 Fins per Inch

Model #	Fan Data		Refrig. Connection			BTUH Capacity @		Unit Weight (lbs)
	Qty	CFM	Liquid	Suction	Drain FPT	25°F ST (R22, R404A)	10°F TD	
SPCA48-1557	4	27,562	1 5/8 OD	2 1/8	1 1/4	155,774	186,929	686
SPCA48-1766	4	27,352	1 3/8 OD	2 1/8	1 1/4	176,614	211,937	754
SPCA58-2070	5	31,000	(2) 1 3/8 OD	(2) 1 5/8	1 1/4	207,000	248,400	933
SPCA68-2412	6	36,000	(2) 1 3/8 OD	(2) 1 5/8	1 1/4	241,217	289,460	1,080

External equalizer is 1/4" diameter

Available with factory installed TXV, solenoid valves, and check valves - call for details.

Connection sizes based on the following – Cooler units = +25°F ST, 10°F TD, R22

For special applications, connection sizes/quantity may vary – call LRC for more information.

Our Application Engineers can help you design the system you need. Call us today, 562-944-1969, and we'll help you get the right LRC product for your project.

Jumbo Freezer Units – Electric/Hot Gas Defrost

4 Fins per Inch

Model #	Fan Data		Refrig. Connection			BTUH Capacity @			Unit Wt. (lbs)
	Qty	CFM	Liquid	Suction	Drain FPT	10°F TD (R22, R404A)	-30°F ST	-20°F ST	
SPC*44-1359	4	28,100	(2) 1 3/8 OD	(2) 2 1/8	1 1/4	120,142	135,907	141,343	697
SPC*54-1482	5	33,986	(2) 1 3/8 OD	(2) 2 1/8	1 1/4	131,026	148,219	154,148	749
SPC*54-1693	5	33,650	(2) 1 3/8 OD	(2) 2 1/8	1 1/4	149,730	169,378	176,153	841
SPC*64-1990	6	39,972	(2) 1 3/8 OD	(2) 2 1/8	1 1/4	175,916	199,000	206,960	997

6 Fins per Inch

Model #	Fan Data		Refrig. Connection			BTUH Capacity @			Unit Wt. (lbs)
	Qty	CFM	Liquid	Suction	Drain FPT	10°F TD (R22, R404A)	-30°F ST	-20°F ST	
SPC*46-1339	4	26,775	(2) 1 3/8 OD	(2) 2 1/8	1 1/4	118,395	133,931	139,288	652
SPC*46-1468	4	26,550	(2) 1 3/8 OD	(2) 2 1/8	1 1/4	129,819	146,854	152,728	717
SPC*56-1724	5	33,665	(2) 1 3/8 OD	(2) 2 1/8	1 1/4	152,462	172,468	179,367	790
SPC*56-1963	5	33,530	(2) 1 3/8 OD	(2) 2 1/8	1 1/4	173,611	196,392	204,248	865
SPC*66-2291	6	39,744	(2) 1 3/8 OD	(2) 2 1/8	1 1/4	202,598	229,183	238,350	1,024

Replace "*" with either E (for electric defrost) or H (for hot gas defrost) when ordering

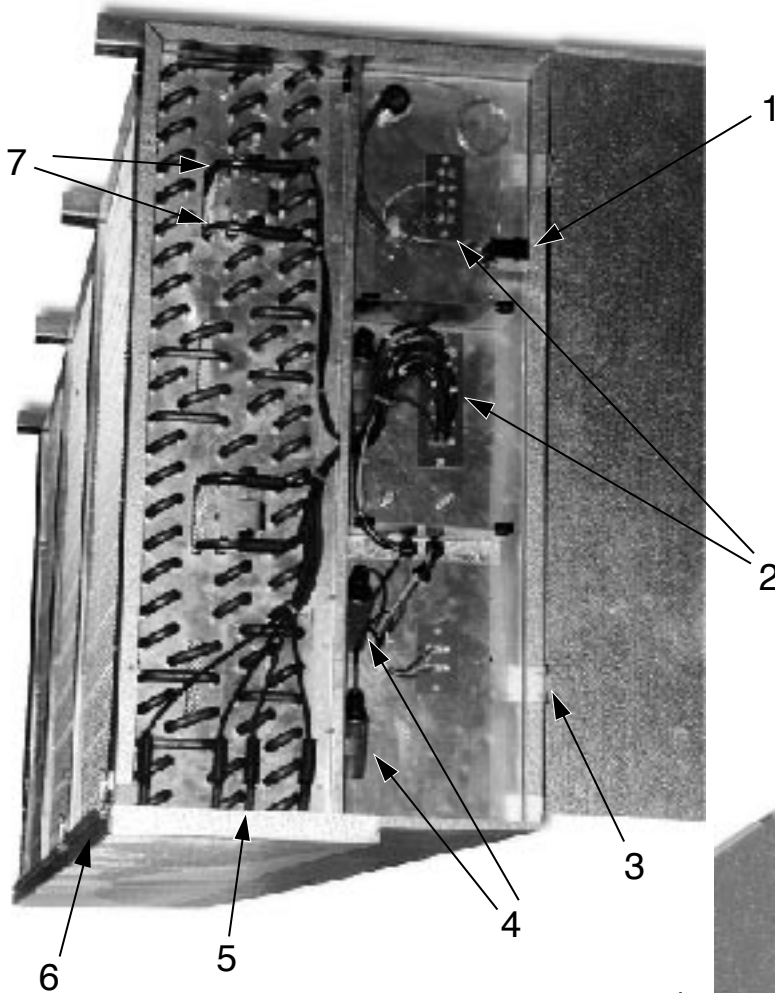
Hot Gas Connection – 4, 5, and 6 fans = 1 1/8"

External equalizer is 1/4" diameter

Available with factory installed TXV, solenoid valves, and check valves - call for details.

Connection sizes based on the following – Freezer units = -20°F ST, 10°F TD, R404A

For special applications, connection sizes/quantity may vary – call LRC for more information.



Typical Electric Defrost/Electrical Connection Layout

1. Adjustable defrost termination/fan delay control
2. Screw type terminal blocks makes wiring simple
3. Hinged access door
4. Fan motor capacitors
5. Drain pan defrost heaters
6. Quick release drain pan latch
7. Defrost heater(s) are located in the center of the coil to provide a rapid and even defrost pattern. Coils are split to provide easy access to heating elements.

Typical Refrigeration Connection Layout

1. Liquid inlet from TX valve
2. Durable, rustproof aluminum cabinet standard. Ample space is provided for expansion valve(s) and refrigerant connections
3. Hinged access door
4. Hinged drain pan door
5. Suction connection
6. High performance staggered coils, with tubing mechanically expanded into aluminum collared fins
7. Slotted hangers make installation fast and easy

