



RM/RMD SPARE PARTS LISTING

General Notes:

Always replace parts using LRC Coil parts for maximum life from the unit.

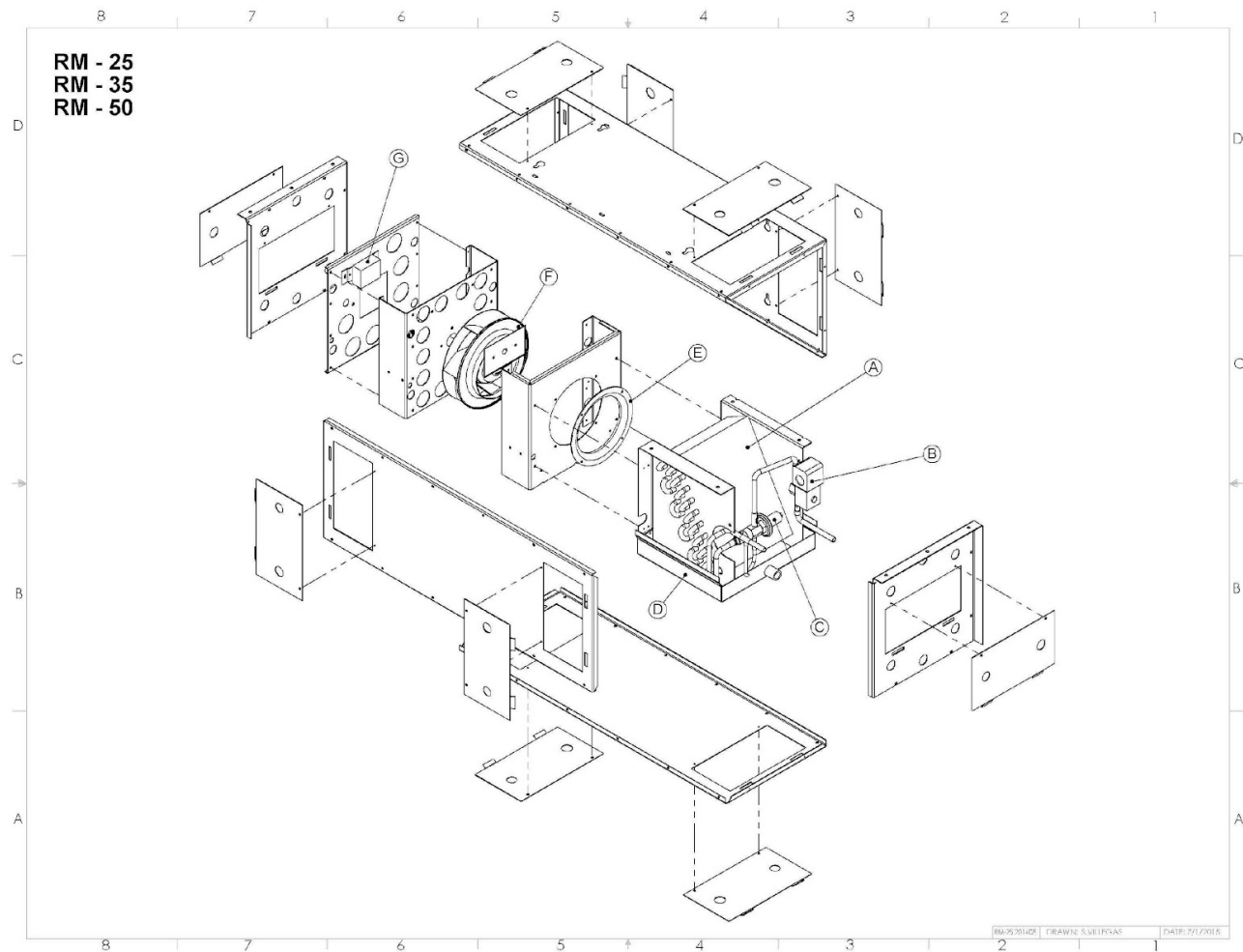
**DISCONNECT POWER BEFORE SERVICING UNIT OR INJURY
MAY RESULT**

Interpreting Serial Numbers

LRC Coil serial numbers are arranged with a unique serial number and date code.

#####-YYMM

- unique serial number
YYMM – Year Month of manufacture



Note: Pre 2014 a 2 port (internally equalized) AXV was used. After that a 3 port (externally equalized) AXV was used. Always verify which configuration the customer wants. It is recommended that a 3 port/externally equalized valve be used for maximum system reliability.

Model	Part Description	PN	Comment
RM-25	A-Coil Assy-includes coil, coating, AXV, LLSV	26619-30 (EC & Reg.)	Coil assy is coated, w/ AXV, LLSV, Not coated pre-2009
	B-LLSV-Sol+Valve (120vac coil)	2351 + 2760	Recommended to replace both
	B(optional) -LLSV-Sol+ Valve (24vac coil)	2351+3130	Recommended to replace both
	C-AXV	2 Port - 2847	Pre late 2014 – verify config.
		3 Port - 3628	Recommended
	D-Drain Pan	19895-01 (EC & Reg.)	Stainless Steel
	E-Inlet Ring	Part of Impeller Kit	Replace as part of set
	F-Impeller	2274-kit (120V, PSC) 3414-kit (230V, PSC) 4331 (120V, ECM)	Impeller, ring and capacitor EC motor w/ adapter plate for 4074EC
	G-Speed Ctrl	2953 (120V) 3653 (230V) 4248	2.5 Amp (do not use on EC models) Potentiometer (EC Models only)
RM-35	A-Coil Assy-includes coil, coating, AXV, LLSV	26620-20 (EC & Reg.)	Coil assy is coated, w/ AXV, LLSV, Not coated pre-2009
	B-LLSV-Sol+Valve (120vac coil)	2351 + 2760	Recommended to replace both
	B(optional) -LLSV-Sol+ Valve (24vac coil)	2351+3130	Recommended to replace both
	C-AXV	2 Port - 2847	Pre late 2014 – verify config.
		3 Port - 3628	Recommended
	D-Drain Pan	20551-00 (EC & Reg.)	Stainless Steel
	E-Inlet Ring	Part of Impeller Kit	Replace as part of set
	F-Impeller	2274-kit (120V, PSC) 3414-kit (230V, PSC)	Impeller, ring and capacitor

		4331 (120V, ECM)	EC motor w/ adapter plate for 4074EC
	G-Speed Ctrl	2953 (120V) 3653 (230V) 4248	2.5 Amp (do not use on EC models) Potentiometer (EC models only)

Model	Part Description	PN	Comment
RM-50	A-Coil Assy-includes coil, coating, AXV, LLSV	26622-20 (EC & Reg.)	Coil assy is coated, w/ AXV, LLSV, Not coated pre-2009
	B-LLSV-Sol+Valve (120vac coil)	2351 + 2760	Recommended to replace both
	B(optional) -LLSV-Sol+ Valve (24vac coil)	2351+3130	Recommended to replace both
	C-AXV	3 Port - 3628	AXV
	D-Drain Pan	20551-00 (EC & Reg.)	Aluminum w/ coating
	E-Inlet Ring	Part of Impeller Kit	Replace as part of set
	F-Impeller	2274-kit (120V, PSC) 3414-kit (230V, PSC) 4331 (120V, ECM)	Impeller, ring and capacitor EC motor w/ adapter plate for 4074EC
	G-Speed Ctrl	2274-kit (120V, PSC) 3414-kit (230V, PSC) 4331 (120V, ECM)	Impeller, ring and capacitor EC motor w/ adapter plate for 4074EC

RM-65	A-Coil Assy-includes coil, coating, AXV, LLSV	26677-10 (EC & Reg.)	Coil assy is coated, w/ AXV, LLSV, Not coated pre-2009
	B-LLSV-Sol+ Valve (120vac coil)	2351 + 2760	Recommended to replace both
	B(optional) -LLSV-Sol+ Valve (24vac coil)	2351+3130	Recommended to replace both
	C-AXV	2 Port - 2847	Pre late 2014 – verify config.
		3 Port - 3628	Recommended
	D-Drain Pan	20551-00 (EC & Reg.)	Stainless Steel
	E-Inlet Ring	Part of Impeller Kit	Replace as part of set
	F-Impeller	2274-kit (120V, PSC) 3414-kit (230V, PSC) 4331 (120V, ECM)	Impeller, ring and capacitor EC motor w/ adapter plate for 4074EC
	G-Speed Ctrl	2274-kit (120V, PSC) 3414-kit (230V, PSC) 4331 (120V, ECM)	Impeller, ring and capacitor EC motor w/ adapter plate for 4074EC