



VAH

General Notes:

Always replace parts using LRC Coil parts for maximum life from the unit.

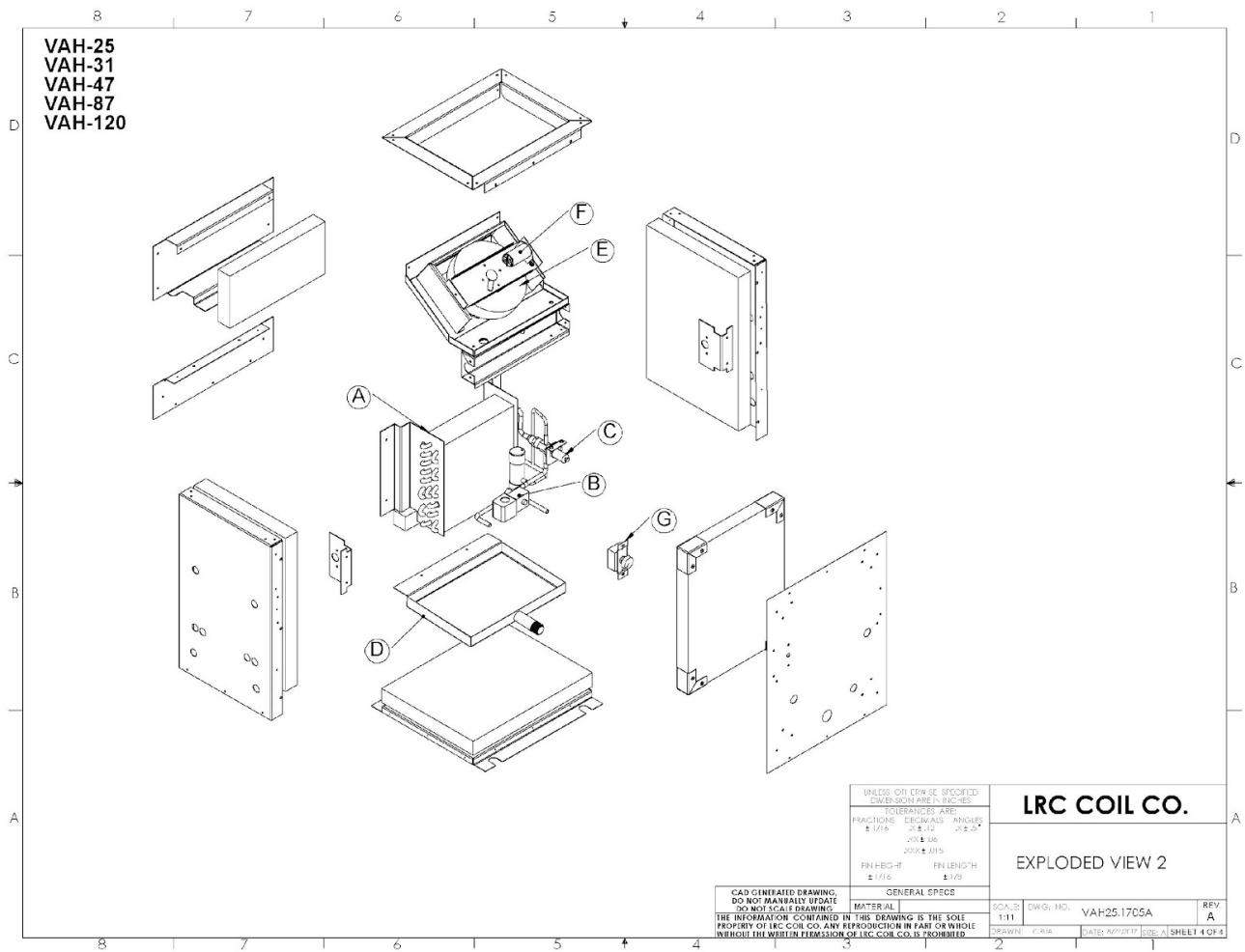
**DISCONNECT POWER BEFORE SERVICING UNIT OR INJURY
MAY RESULT**

Interpreting Serial Numbers

LRC Coil serial numbers are arranged with a unique serial number and date code.

#####-YYMM

- unique serial number
YYMM – Year Month of manufacture



Note: many versions of VAH's have been manufactured up to the time of the introduction of the EC model. With PSC replacement motors getting scarce always get Serial Number for any PSC version and check with engineering.

Model	Part Description	PN	Comment
VAH-25	A-Coil Assy-includes coil, coating, AXV, LLSV	25495-08 26844-10 (EC)	Coil assy is coated, w/ AXV, LLSV, Not coated pre-2009
	B-LLSV-Sol+Valve (120vac coil)	2351 + 2760	Recommended to replace both
	B(optional) -LLSV-Sol+Valve (24vac coil)	2351+3130	Recommended to replace both
	C-AXV	2 Port - 2847	Pre late 2014 – verify config.
		3 Port - 3628	Recommended
	D-Drain Pan	25495-28 26844-07 (EC)	Stainless Steel
	E-Inlet Ring	Part of Impeller Kit	Replace as part of set
	F-Impeller	2274-kit 4331 (EC)	Impeller, ring and capacitor no capacitor for EC
	G-Speed Ctrl	2953 4248 Potentiometer	Up to 2.5A do not use for EC Use for EC motors only
VAH-31	A-Coil Assy-includes coil, coating, AXV, LLSV	25570-01 26638-10 (EC)	Coil assy is coated, w/ AXV, LLSV, Not coated pre-2009
	B-LLSV-Sol+Valve (120vac coil)	2351 + 2760	Recommended to replace both
	B(optional) -LLSV-Sol+Valve (24vac coil)	2351+3130	Recommended to replace both
	C-AXV	2 Port - 2847	Pre late 2014 – verify config.
		3 Port - 3628	Recommended
	D-Drain Pan	25570-31 26638-07 (EC)	Stainless Steel

	E-Inlet Ring	Part of Impeller Kit	Replace as part of set
	F-Impeller	2848-kit 4331 (EC)	Impeller, ring and capacitor no capacitor for EC Motor assembly may be needed
	G-Speed Ctrl	2953 4248	Up to 2.5A do not use for EC Potentiometer

Model	Part Description	PN	Comment
VAH-47	A-Coil Assy-includes coil, coating, AXV, LLSV	25424-10 26770-10 (EC)	Coil assy is coated, w/ AXV, LLSV, Not coated pre-2009
	B-LLSV-Sol+Valve (120vac coil)	2351 + 2760	Recommended to replace both
	B(optional) -LLSV-Sol+Valve (24vac coil)	2351+3130	Recommended to replace both
	C-AXV	3 Port - 3628	Recommended
	D-Drain Pan	25423-17 26770-17 (EC)	stainless steel
	E-Inlet Ring	Part of Impeller Kit	Replace as part of set
	F-Impeller	2848-kit 4331 (EC)	Impeller, ring and capacitor no capacitor for EC
	G-Speed Ctrl	2953 4248	2.5 Amp do not use for EC Potentiometer
VAH-66/87	A-Coil Assy-includes coil, coating, AXV, LLSV	22049-00 26629-30 (EC)	Coil assy is coated, w/ AXV, LLSV, Not coated pre-2009
	B-LLSV-Sol+Valve (120vac coil)	2351 + 2760	Recommended to replace both
	B(optional)	2351+3130	Recommended to replace both

	-LLSV-Sol+Valve (24vac coil)		
	C-AXV	3 Port - 3628	Recommended
	D-Drain Pan	22049-39 26629-31 (EC)	stainless steel
	E-Inlet Ring	Part of Impeller Kit	Replace as part of set
	F-Impeller	2841-kit 4331 multiple motor assembly(EC)	Impeller, ring and capacitor no cap for EC Consult Engineering
	G-Speed Ctrl	3653 4248	5.0 Amp do not use for EC Potentiometer

VAH-120	A-Coil Assy-includes coil, coating, AXV, LLSV	25294-00 25294-30 (EC)	Coil assy is coated, w/ AXV, LLSV, Not coated pre-2009
	B-LLSV-Sol+Valve (120vac coil)	2351 + 2760	Recommended to replace both
	B(optional) -LLSV-Sol+Valve (24vac coil)	2351+3130	Recommended to replace both
	C-AXV	3 Port - 3628	Recommended
	D-Drain Pan	21221-00	Pre-1/2015, Aluminum w/ coating
		21221-01	Post-1/2015, Aluminum w/ coating
		25295-09 (EC)	stainless steel
	E-Inlet Ring	Part of Impeller Kit	Replace as part of set
	F-Impeller	2842-kit 4331 multiple motor assy (EC)	Impeller, ring and capacitor no cap for EC Consult Engineering
	G-Speed Ctrl	3653 4248	5.0 Amp do not use on EC Potentiometer

VAH-180 EC	A-Coil Assy-includes coil, coating, AXV, LLSV	26474-30	Coil assy is coated, w/ AXV, LLSV,
	B-LLSV-Sol+Valve (120vac coil)	2351 + 2760 or 2761 (230v)	Recommended to replace both
	B(optional) -LLSV-Sol+Valve (24vac coil)	2351+3130	Recommended to replace both
	C-AXV	3 Port - 3628	Recommended
	D-Drain Pan	26474-37	stainless steel
	E-Inlet Ring	n/a	

	F-Impeller	4331 multiple motor assembly	Consult Engineering
	G-Speed Ctrl	n/a 4248	do not use normal speed controls on EC motors Potentiometer