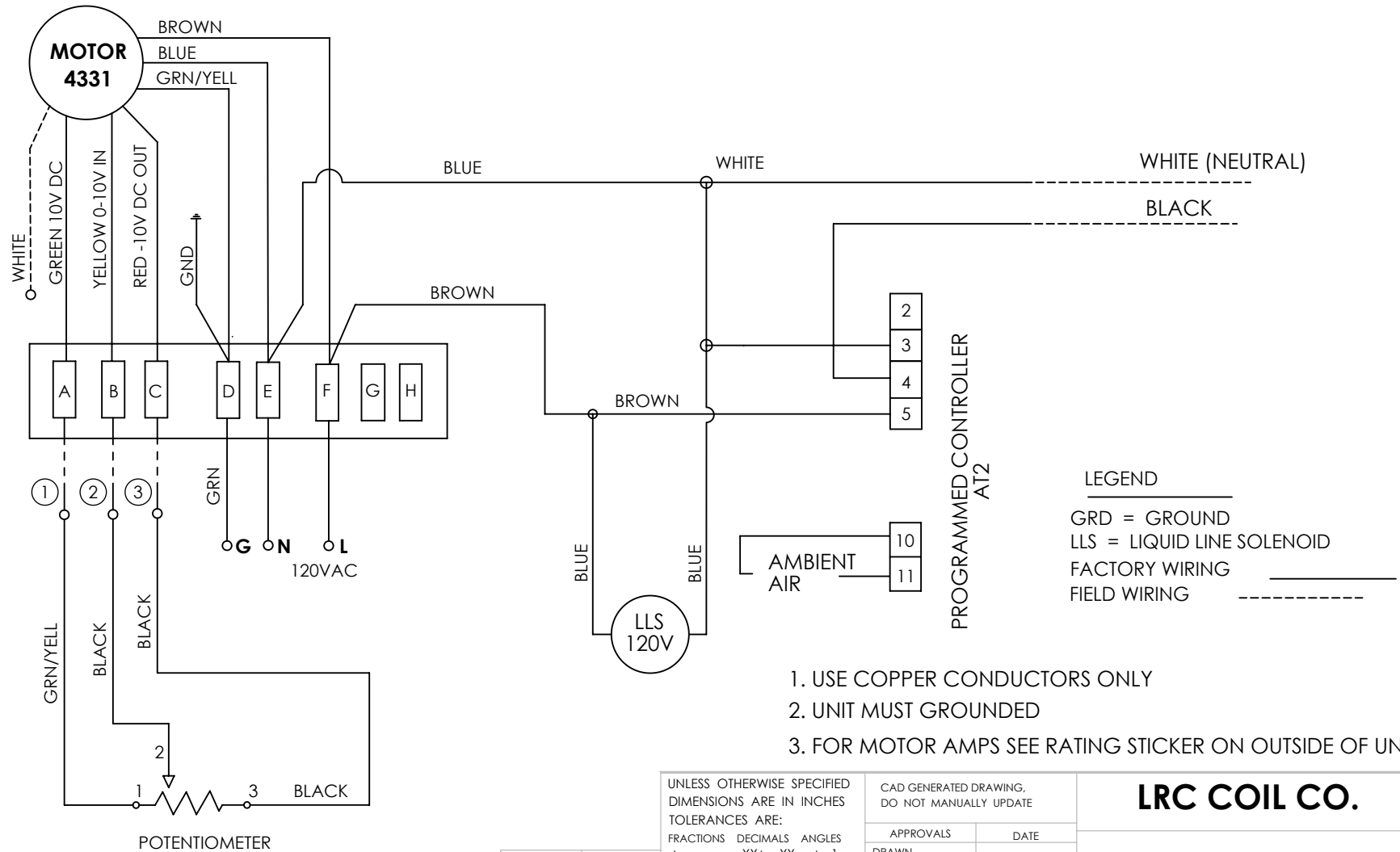


# LAE ELECTRONIC AT2-5 CONTROL 115V, POTENTIOMETER, EC MOTOR & SOLENOID

## FACTORY & FIELD WIRING



1. USE COPPER CONDUCTORS ONLY
2. UNIT MUST GROUND
3. FOR MOTOR AMPS SEE RATING STICKER ON OUTSIDE OF UNIT.

UNLESS OTHERWISE SPECIFIED DIMENSIONS ARE IN INCHES TOLERANCES ARE: FRACTIONS DECIMALS ANGLES + .XX+ .XX + 1 .XXX+.XXX		CAD GENERATED DRAWING, DO NOT MANUALLY UPDATE		<b>LRC COIL CO.</b>		
		APPROVALS	DATE	WM 15, 25, 35 & 50 WIRING DIAGRAM FOR WM-LINE WITH LAE CONTROL 115V, SPEED CONTROL & SOLENOID		
		DRAWN	GA			9/5/2013
		CHECKED				
		RESP ENG				
MATERIAL	XX	MFG ENG			SIZE A	
FINISH	--	QUAL ENG			DWG. NO.	
NEXT ASSY	USED ON				19647-07	
APPLICATION		DO NOT SCALE DRAWING		SCALE	SHEET OF	
		CAD FILE:			REV. A	

THE INFORMATION CONTAINED IN THIS DRAWING IS THE SOLE PROPERTY OF LRC COIL CO. ANY REPRODUCTION IN PART OR WHOLE WITHOUT THE WRITTEN PERMISSION OF LRC COIL CO. IS PROHIBITED.

8      7      6      5      4      3      2      1

D  
C  
B  
A

D  
C  
B  
A

8      7      6      5      4      3      2      1