



CTE SPARE PARTS LISTING

General Notes:

Always replace parts using LRC Coil parts for maximum life from the unit.

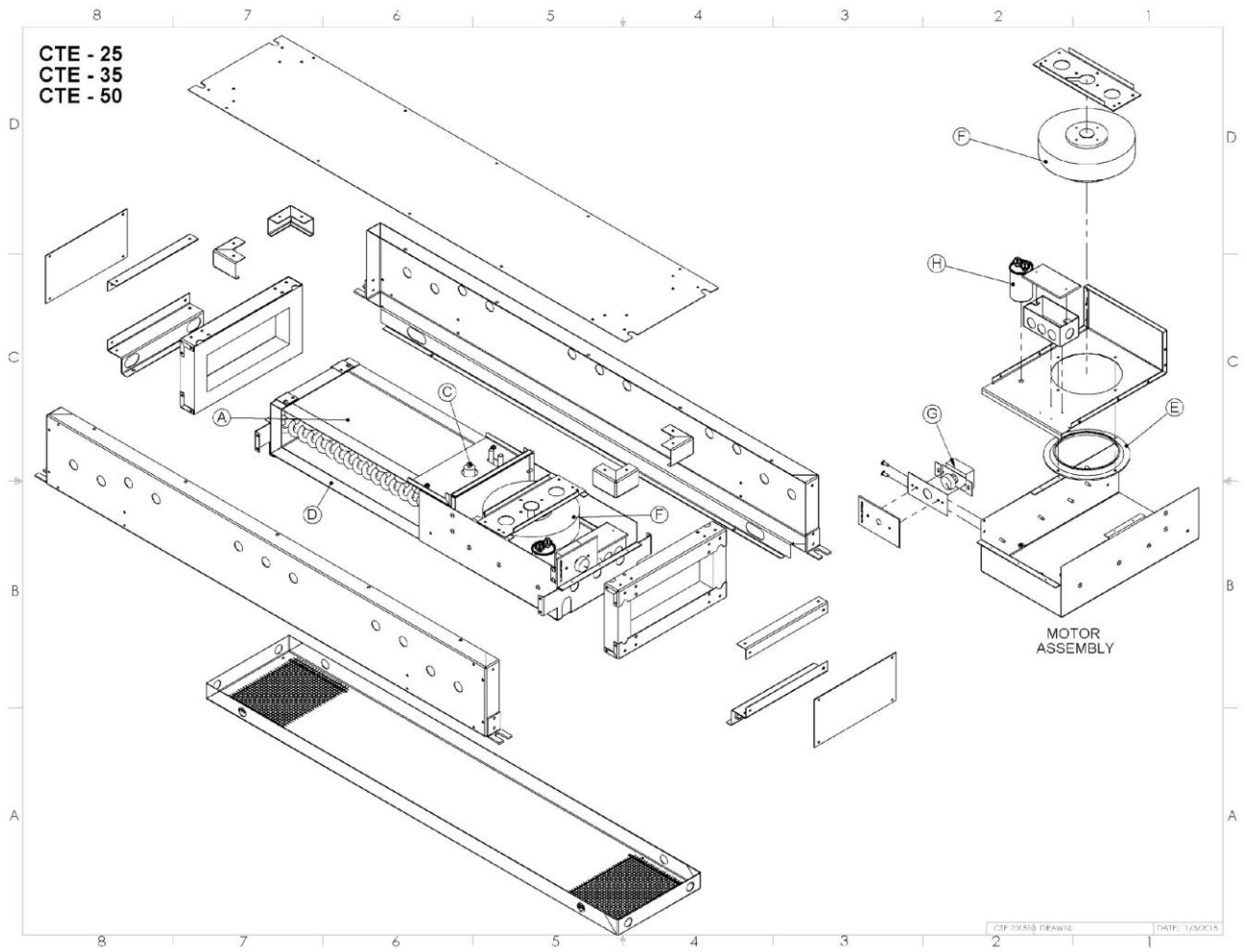
**DISCONNECT POWER BEFORE SERVICING UNIT OR INJURY
MAY RESULT**

Interpreting Serial Numbers

LRC Coil serial numbers are arranged with a unique serial number and date code.

#####-YYMM

- unique serial number
YYMM – Year Month of manufacture



Model	Part Description	PN	Comment
CTE25, 35, 50	A-Coil Assy-includes coil, coating, AXV, LLSV		
	CTE-25 Coil Assembly	25525-00 (Before 2206) 27181-00 (2206 and after)	
	CTE-35 Coil Assembly	25525-00(Before 2206) 27181-00 (2206 and after)	
	CTE-50 Coil Assembly	25700-00(Before 2208) 27304-10 (2208 and after)	
	B – LLSV – CTE-50 only		
	LLSV-Sol+Valve (120vac coil)	2351 + 2760	Recommended to replace both
	LLSV-Sol+Valve (24vac coil)	2351+3130	Recommended to replace both
	C -AXV	3 Port - 3628	
	D-Drain Pan		
	CTE-25	25524-12 (PSC) 27181-30 (ECM)	PSC Versions prior 2208, ECM 2208 and after
	CTE-35	25524-12 (PSC) 27181-30 (ECM)	PSC Versions prior 2208, ECM 2208 and after
	CTE-50	25700-04 (PSC) 27304-04 (ECM)	PSC Versions prior 2208, ECM 2208 and after
	E-Inlet Ring	Part of Impeller Kit	Replace as part of set
	F-Impeller	2274-kit (PSC) 4331 (ECM)	Impeller, ring and capacitor (before 2206) EC Version (2206 and after)
	G-Speed Ctrl	2953 4248	Up to 2.5A (before 2206) Potentiometer (EC only – after 2206)

CTE redesign too place in 2206 for CTE25/35 and 2206 for CTE-50.