



SL, SLE, SLA SERIES UNITS SPARE PARTS LISTING

General Notes:

Always replace parts using LRC Coil parts for maximum life from the unit.

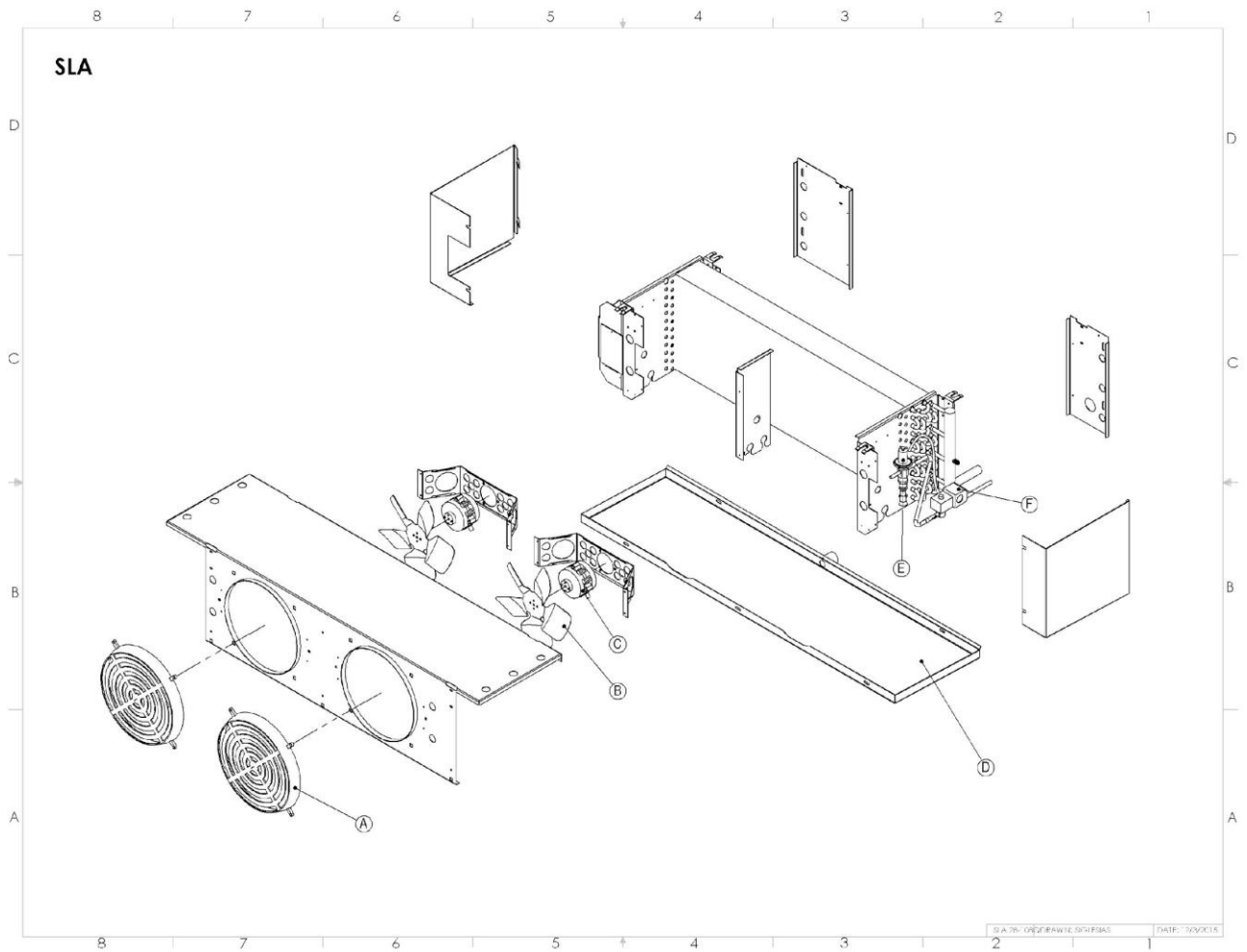
**DISCONNECT POWER BEFORE SERVICING UNIT OR INJURY
MAY RESULT**

Interpreting Serial Numbers

LRC Coil serial numbers are arranged with a unique serial number and date code.

#####-YYMM

- unique serial number
YYMM – Year Month of manufacture



Model	Part Description	PN	Comment
A	Fan Guard - Plastic	3088	
	Fan Guard – White Wire	1037	No longer available
B	Fan Blade		
	Q (Wine) Series Models -	2295	
	Regular - Refrigeration	2295	
C	Motor		
	120VAC – EC Motor	3707-22 (Wine), “-23” for normal refrigeration	Must specify Q or Regular model
	230VAC – EC Motor	3708 - must specify “-wine” or “-ref”	Must specify Q or Regular model
	Note: for units from 2000 and before please inform the customer to purchase a standard “16 watt Unit Bearing Motor” from the wholesaler along with a 10”, 5 petal fan blade that directs the air out and away from the motor. LRC no longer has access to these old motors.		
D	Drain Pan		
	SL Series (Pre 2001) – 1 Fan	A-2593-1	SL-420, SL-510, SLE-355
	2 Fan	A-2593-2	SL-700, SL-840, SL-1020, SLE-580, SLE-710
	3 Fan	A-2593-3	SL-1530, SLE-1065
	4 Fan	A-2593-4	SL-1690, SL-2040, SLE-1420
	5 Fan	A-2593-5	SL-2550, SLE-1775
	6 Fan	A-2593-6	SL-3060, SLE-2130
	SLA Series (Current) – 1 Fan	14987-00	SLA & SLE
	2 Fan	14988-00	SLA & SLE
	3 Fan	14955-00	SLA & SLE
	4 Fan	14989-00	SLA & SLE
	5 Fan	14990-00	SLA & SLE
	6 Fan	14991-00	SLA & SLE
E	AXV (Quiet Units Only)	3628	AXV externally equalized.

	Regular TXV's – Consult Refrigeration Wholesaler		
F	LLSV		
	Coil - 24VAC	3130	Alco
	Coil - 120VAC	2760	Alco
	Coil - 240VAC	2761	Alco
	Valve	2351	Alco
G	Defrost Heaters – Pre 2001		
	1 Fan	1220	1 per unit located in Pan, 20", 1100W, 230VAC
	2 Fan	1221	1 per unit located in Pan, 1900W, 37", 230VAC
	3 Fan	1216	1 per unit located in Pan, 2600W, 54", 230VAC
	4 Fan	1217	1 per unit located in Pan, 3500W, 71", 230VAC
	5 Fan	1219	1 per unit located in Pan, 4100W, 88", 230VAC
	6 Fan	1218	1 per unit located in Pan, 4100W, 105", 230VAC
	Defrost Heaters – Post 2001		
	1 Fan	2219	2 per unit located in Pan, Center of Coil, 22", 550W, 230VAC
	2 Fan	2220	2 per unit located in Pan, Center of Coil, 39", 950W, 230VAC
	3 Fan	2251	2 per unit located in Pan, Center of Coil, 1025W, 56", 230VAC
	4 Fan	2222	2 per unit located in Pan, Center of Coil, 1750W, 73", 230VAC
	5 Fan	2223	2 per unit located in Pan, Center of Coil, 2050W, 90", 230VAC
	6 Fan	2050	2 per unit located in Pan, Center of Coil, 2050W, 107", 230VAC
H	Defrost Control		
	Pre 2001	Obsolete	Ranco F25 series controller-available at wholesalers
	Post 2001	2306 – Fan Delay	Brown/Red wires, open @45, Close @35

		2305 – Defrost Termination	Black/Red wires, Open @ 30, Close @ 50 +/-5
		2166 – Heater Safety	Heater Safety Switch, 14T21 30313

Units built before 1990 used a motor mounted external through the fan guard. These fan guard/motor mounts are no longer available.