



## VAH

### General Notes:

**Always replace parts using LRC Coil parts for maximum life from the unit.**

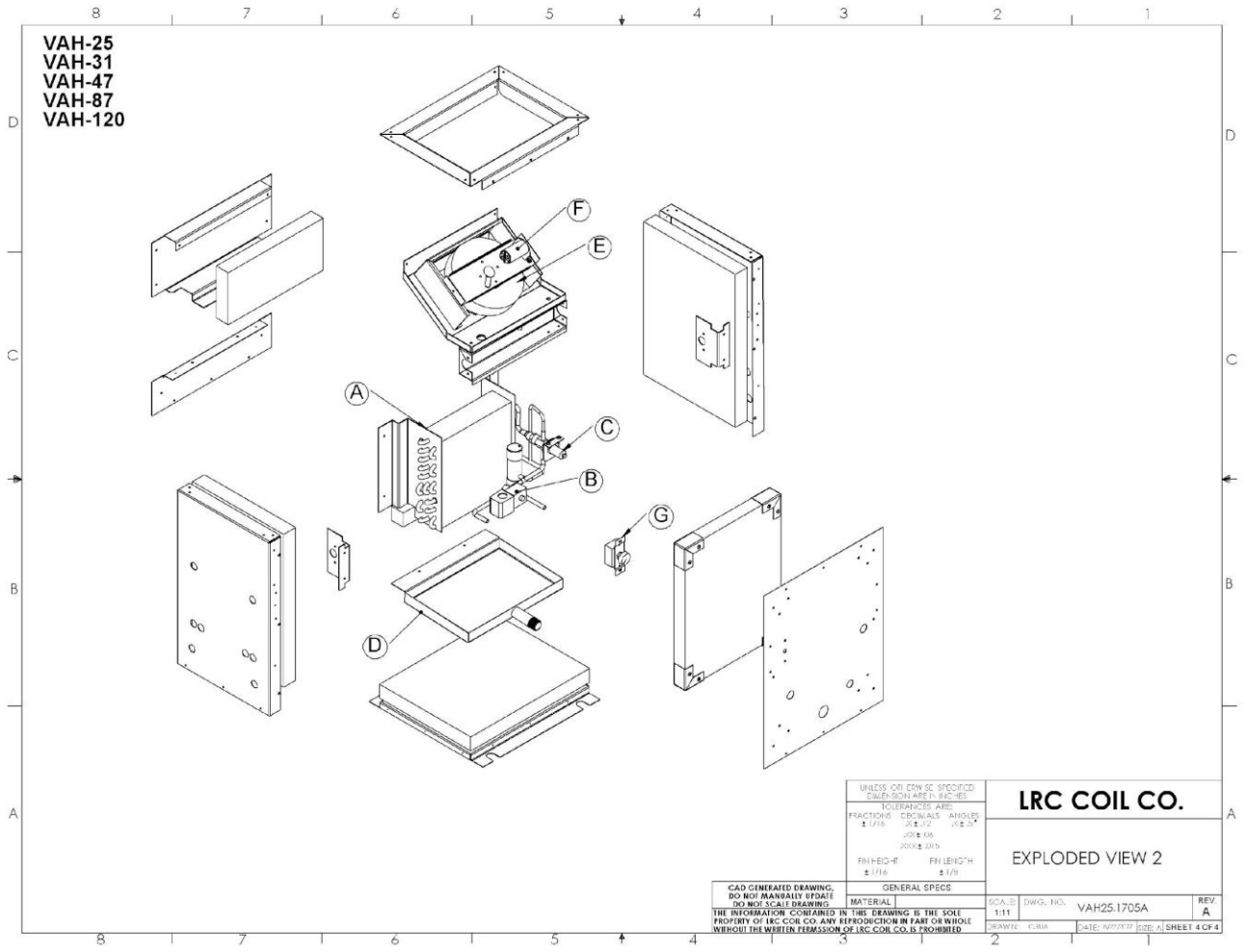
**DISCONNECT POWER BEFORE SERVICING UNIT OR INJURY  
MAY RESULT**

### Interpreting Serial Numbers

LRC Coil serial numbers are arranged with a unique serial number and date code.

#####-YYMM

##### - unique serial number  
YYMM – Year Month of manufacture



Note: many versions of VAH's have been manufactured up to the time of the introduction of the EC model. With PSC replacement motors getting scarce always get Serial Number for any PSC version and check with engineering.

Model	Part Description	PN	Comment
<b>VAH-25</b>	A-Coil Assy-includes coil, coating, AXV, LLSV	25495-08 26844-10 (EC)	Coil assy is coated, w/ AXV, LLSV, Not coated pre-2009
	B-LLSV-Sol+Valve (120vac coil)	2351 + 2760	Recommended to replace both
	B(optional) -LLSV-Sol+Valve (24vac coil)	2351+3130	Recommended to replace both
	C-AXV	2 Port - 2847	Pre late 2014 – verify config.
		3 Port - 3628	Recommended
	D-Drain Pan	25495-28 26844-07 (EC)	Stainless Steel
	E-Inlet Ring	Part of Impeller Kit	Replace as part of set
	F-Impeller	2274-kit 4331 (EC)	Impeller, ring and capacitor no capacitor for EC
	G-Speed Ctrl	2953	Up to 2.5A do not use for EC
		4248 Potentiometer	Use for EC motors onlhy
<b>VAH-31</b>	A-Coil Assy-includes coil, coating, AXV, LLSV	25570-01 26638-10 (EC)	Coil assy is coated, w/ AXV, LLSV, Not coated pre-2009
	B-LLSV-Sol+Valve (120vac coil)	2351 + 2760	Recommended to replace both
	B(optional) -LLSV-Sol+Valve (24vac coil)	2351+3130	Recommended to replace both
	C-AXV	2 Port - 2847	Pre late 2014 – verify config.
		3 Port - 3628	Recommended
	D-Drain Pan	25570-31 26638-07 (EC)	Stainless Steel
	E-Inlet Ring	Part of Impeller Kit	Replace as part of set
	F-Impeller	2848-kit	Impeller, ring and capacitor no capacitor for EC

		4331 (EC)	Motor assembly may be needed
	G-Speed Ctrl	2953	Up to 2.5A do not use for EC
		4248	Potentiometer

Model	Part Description	PN	Comment
<b>VAH-47</b>	A-Coil Assy-includes coil, coating, AXV, LLSV	25424-10 26770-10 (EC)	Coil assy is coated, w/ AXV, LLSV, Not coated pre-2009
	B-LLSV-Sol+Valve (120vac coil)	2351 + 2760	Recommended to replace both
	B(optional) -LLSV-Sol+Valve (24vac coil)	2351+3130	Recommended to replace both
	C-AXV	3 Port - 3628	Recommended
	D-Drain Pan	25423-17 26770-17 (EC)	stainless steel
	E-Inlet Ring	Part of Impeller Kit	Replace as part of set
	F-Impeller	2848-kit 4331 (EC)	Impeller, ring and capacitor no capacitor for EC
	G-Speed Ctrl	2953	2.5 Amp do not use for EC
		4248	Potentiometer
<b>VAH-66/87</b>	A-Coil Assy-includes coil, coating, AXV, LLSV	22049-00 26629-30 (EC)	Coil assy is coated, w/ AXV, LLSV, Not coated pre-2009
	B-LLSV-Sol+Valve (120vac coil)	2351 + 2760	Recommended to replace both
	B(optional) -LLSV-Sol+Valve (24vac coil)	2351+3130	Recommended to replace both
	C-AXV	3 Port - 3628	Recommended
	D-Drain Pan	22049-39 26629-31 (EC)	stainless steel
	E-Inlet Ring	Part of Impeller Kit	Replace as part of set
	F-Impeller	2841-kit	Impeller, ring and capacitor no cap for EC

		4331 multiple motor assembly(EC)	Consult Engineering
	G-Speed Ctrl	3653	5.0 Amp do not use for EC
		4248	Potentiometer

<b>VAH-120</b>	A-Coil Assy-includes coil, coating, AXV, LLSV	25294-00 25294-30 (EC)	Coil assy is coated, w/ AXV, LLSV, Not coated pre-2009
	B-LLSV-Sol+Valve (120vac coil)	2351 + 2760	Recommended to replace both
	B(optional) -LLSV-Sol+Valve (24vac coil)	2351+3130	Recommended to replace both
	C-AXV	3 Port - 3628	Recommended
	D-Drain Pan	21221-00	Pre-1/2015, Aluminum w/ coating
		21221-01	Post-1/2015, Aluminum w/ coating
		25295-09 (EC)	stainless steel
	E-Inlet Ring	Part of Impeller Kit	Replace as part of set
	F-Impeller	2842-kit	Impeller, ring and capacitor no cap for EC
		4446 multiple motor assy (EC) 27449-60	4 impeller set w/ fan panel and potentiometer
	G-Speed Ctrl	3653	5.0 Amp do not use on EC
		4248	Potentiometer

<b>VAH-180EC</b>	A-Coil Assy-includes coil, coating, AXV, LLSV	26474-30	Coil assy is coated, w/ AXV, LLSV,
	B-LLSV-Sol+Valve (120vac coil)	2351 + 2760 or 2761 (230v)	Recommended to replace both
	B(optional) -LLSV-Sol+Valve (24vac coil)	2351+3130	Recommended to replace both
	C-AXV	3 Port - 3628	Recommended
	D-Drain Pan	26474-37	stainless steel
	E-Inlet Ring	n/a	
	F-Impeller	4116	EC Impeller
	G-Speed Ctrl	n/a	do not use normal speed controls on EC motors
		4248	Potentiometer

