



VRM SPARE PARTS LISTING

General Notes:

Always replace parts using LRC Coil parts for maximum life from the unit.

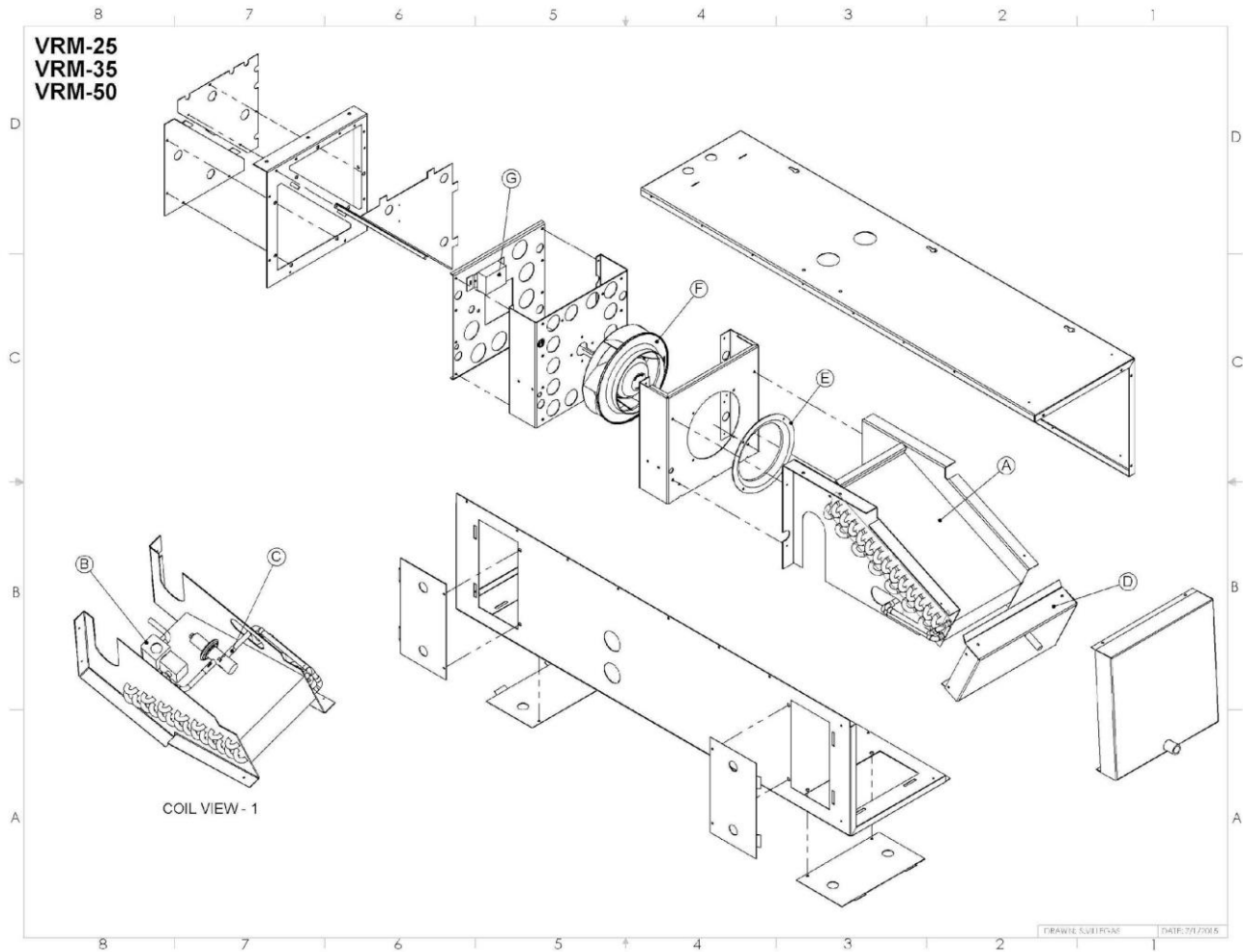
**DISCONNECT POWER BEFORE SERVICING UNIT OR INJURY
MAY RESULT**

Interpreting Serial Numbers

LRC Coil serial numbers are arranged with a unique serial number and date code.

#####-YYMM

- unique serial number
YYMM – Year Month of manufacture



Note: Pre 2014 a 2 port (internally equalized) AXV was used. After that a 3 port (externally equalized) AXV was used. Always verify which configuration the customer wants. It is recommended that a 3 port/externally equalized valve be used for maximum system reliability.

Model	Part Description	PN	Comment
VRM-25	A-Coil Assy-includes coil, coating, AXV, LLSV	26814-10 (EC & Reg.)	Coil assy is coated, w/ AXV, LLSV, Not coated pre-2009
	B-LLSV-Sol+Valve (120vac coil)	2351 + 2760	Recommended to replace both
	B(optional) -LLSV-Sol+Valve (24vac coil)	2351+3130	Recommended to replace both
	C-AXV	2 Port - 2847	Pre late 2014 – verify config.
		3 Port - 3628	Recommended
	D-Drain Pan	23091-05 (EC & Reg.) Primary 23091-11 (EC & Reg.) Secondary	Stainless Steel Aluminum
	E-Inlet Ring	Part of Impeller Kit	Replace as part of set
	F-Impeller	2274-kit (120V, PSC) 3414-kit (230V, PSC) 4331 (120V, ECM)	Impeller, ring and capacitor no cap. for EC For all EC motor replacement include adapter ring with 4331 inlet ring.
	G-Speed Ctrl	2953 (120V) 3653 (230V) 4248 potentiometer (EC)	2.5 Amp (pre 1908) (do not use on EC models) Post 1908 EC models
VRM-35	A-Coil Assy-includes coil, coating, AXV, LLSV	23092-10 (EC & Reg.) 26816-10 (After 12/23/19)	Coil assy is coated, w/ AXV, LLSV, Not coated pre-2009
	B-LLSV-Sol+Valve (120vac coil)	2351 + 2760	Recommended to replace both
	B(optional) -LLSV-Sol+Valve (24vac coil)	2351+3130	Recommended to replace both
	C-AXV	2 Port - 2847	Pre late 2014 – verify config.
		3 Port - 3628	Recommended
	D-Drain Pan	26816-05 (EC & Reg.) Primary 23091-11 (EC & Reg.) Secondary	Stainless Steel Aluminum

	E-Inlet Ring	Part of Impeller Kit	Replace as part of set
	F-Impeller	2274-kit (120V, PSC) 3414-kit (230V, PSC) 4331 (120V, ECM)	Impeller, ring and capacitor no cap for EC For all EC motor replacement include adapter ring with 4331 inlet ring.
	G-Speed Ctrl	2953 (120V) 3653 (230V) 4248 potentiometer	2.5 Amp (do not use on EC models) Use on EC models only

Model	Part Description	PN	Comment
VRM-50	A-Coil Assy-includes coil, coating, AXV, LLSV	24013-00 (EC & Reg.)	Coil assy is coated, w/ AXV, LLSV, Not coated pre-2009
	B-LLSV-Sol+Valve (120vac coil)	2351 + 2760	Recommended to replace both
	B(optional) -LLSV- Sol+Valve (24vac coil)	2351+3130	Recommended to replace both
	C-AXV	2 Port - 2847	Pre late 2014 – verify config.
		3 Port - 3628	Recommended
	D-Drain Pan	23091-05 (EC & Reg.) Primary 23091-11 (EC & Reg.) Secondary	Stainless Steel Aluminum
	E-Inlet Ring	Part of Impeller Kit	Replace as part of set
	F-Impeller	2274-kit (120V, PSC) 3414-kit (230V, PSC) 4331 (120V, ECM)	Impeller, ring and capacitor no cap for EC For all EC motor replacement include adapter ring with 4331 inlet ring.

	G-Speed Ctrl	2953 (120V) 3653 (230V) 4248 potentiometer	2.5 Amp (do not use on EC models) Use on EC models only
VRM-65	A-Coil Assy-includes coil, coating, AXV, LLSV	25468-30 (EC & Reg.)	Coil assy is coated, w/ AXV, LLSV, Not coated pre-2009
	B-LLSV-Sol+Valve (120vac coil)	2351 + 2760	Recommended to replace both
	B(optional) -LLSV-Sol+Valve (24vac coil)	2351+3130	Recommended to replace both
	C-AXV	2 Port - 2847	Pre late 2014 – verify config.
		3 Port - 3628	Recommended
	D-Drain Pan	24113-41 26426-13 (EC) Primary (need 2) 26426-21 Secondary	stainless steel , takes two drain pans Aluminum
	E-Inlet Ring	Part of Impeller Kit	Replace as part of set
	F-Impeller	2848-kit (120V, PSC) 3414-kit (230V, PSC) 4331 (120V, ECM)	Impeller, ring and capacitor For all EC motor replacement include adapter ring with 4331 inlet ring.
	G-Speed Ctrl	2953 (120V) 3653 (230V) 4248	2.5 Amp (do not use on EC models) Use on EC models only

Note: a significant change was made to the VRM-65 in 6/2015. Always verify which generation is being queried for coil replacement.

Change to EC motors was done in August of 2018. All EC motor replacements are to have small adapter plate with the 4331 EC motor.

