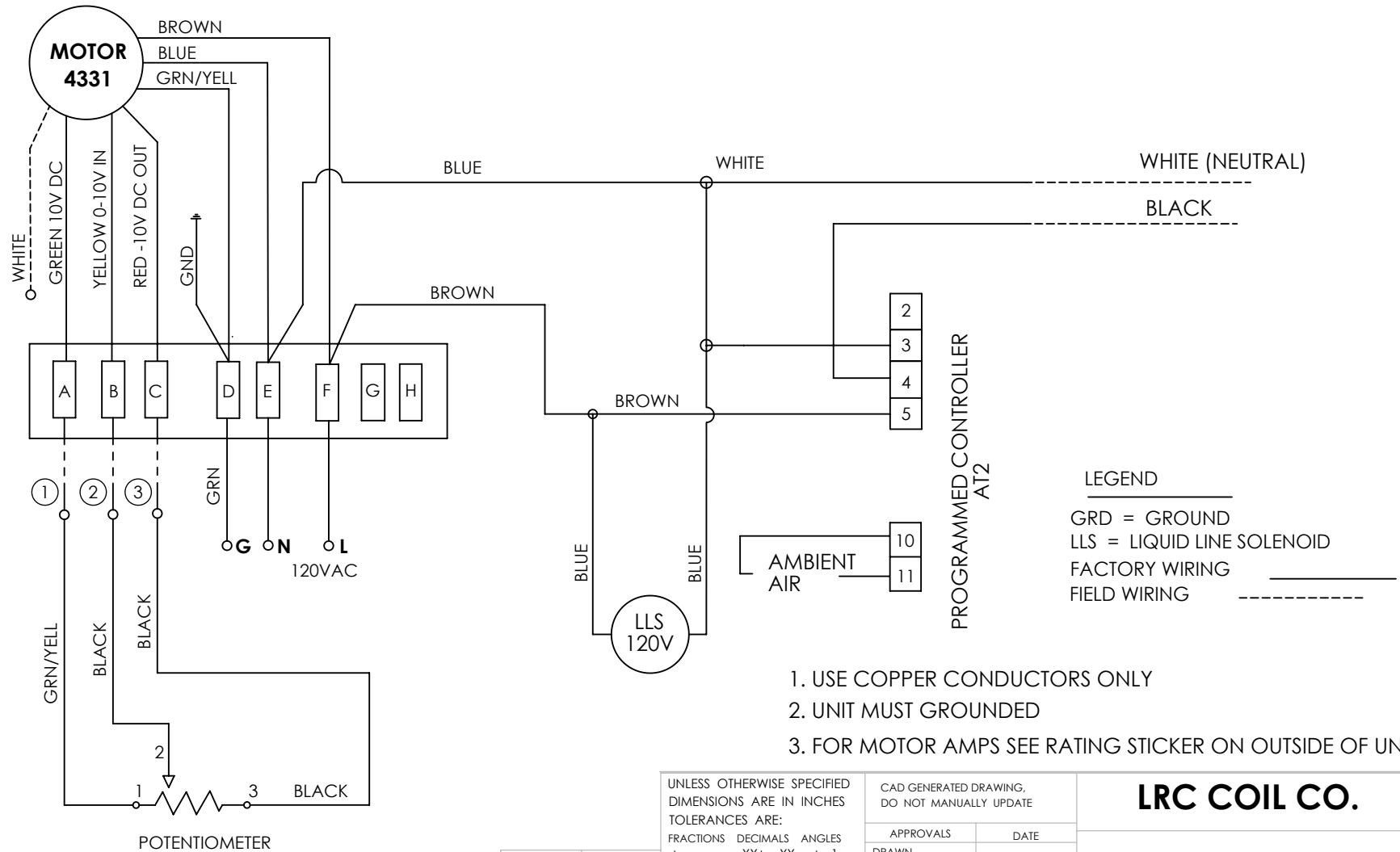


LAE ELECTRONIC AT2-5 CONTROL 115V, POTENTIOMETER, EC MOTOR & SOLENOID

FACTORY & FIELD WIRING



1. USE COPPER CONDUCTORS ONLY
2. UNIT MUST GROUND
3. FOR MOTOR AMPS SEE RATING STICKER ON OUTSIDE OF UNIT.

UNLESS OTHERWISE SPECIFIED DIMENSIONS ARE IN INCHES TOLERANCES ARE: FRACTIONS DECIMALS ANGLES + .XX+ .XX + 1 .XXX+.XXX		CAD GENERATED DRAWING, DO NOT MANUALLY UPDATE		LRC COIL CO.		
		APPROVALS	DATE	WM 15, 25, 35 & 50 WIRING DIAGRAM FOR WM-LINE WITH LAE CONTROL 115V, SPEED CONTROL & SOLENOID		
		DRAWN	GA			9/5/2013
		CHECKED				
		RESP ENG				
MATERIAL	XX	MFG ENG			SIZE A DWG. NO. 19647-07 REV. A	
FINISH	--	QUAL ENG				
NEXT ASSY	USED ON	DO NOT SCALE DRAWING		SCALE	CAD FILE:	
APPLICATION		SHEET	OF			

THE INFORMATION CONTAINED IN THIS DRAWING IS THE SOLE PROPERTY OF LRC COIL CO. ANY REPRODUCTION IN PART OR WHOLE WITHOUT THE WRITTEN PERMISSION OF LRC COIL CO. IS PROHIBITED.

UNIT WILL HAVE A TURN ON DELAY OF 2 MIN, TO CHANGE
MODIFY "CRT"

AT2 LAE PARAMETERS

AT2 PARA	LRC VALUES	DESCRIPTION
SCL	F	READOUT SCALE
SPL	0	MIN SE TPOINT TEMPERATURE
SPH	100	MAX SE TPOINT TEMPERATURE
SP	53	SET POINT
C-H	REF	CONTROL MODE
HYS	2	THERMOSTAT DIFFERENTIAL
CRT	2	COMPRESSOR REST TIME
CT1	4	CYCLE TIME ON (WHEN T1 PROBE FAILS)
CT2	6	CYCLE TIME OFF (WHEN T1 PROBE FAILS)
CSD	0	COMPRESSOR STOP DELAY, WHEN USING DOOR SENSOR
DTY	OFF	DEFROST TYPE
DRN	0	PAUSE AFTER DEFROST
DDY	0	DISPLAY DURING DEFROST
FID	YES	FANS ACTIVE DURING DEFROST
FDD	0	EVAPORATOR FAN RESTART TIME
FTC	NO	OPTOMISED FAN CONTROL
FT1	0	FAN STOP DELAY
FT2	0	TIMED FAN STOP
FT3	0	TIMED FAN RUN
ATM	NON	ALARM THESHOLD MANAGEMENT
ADO	0	DELAY BEFORE DOOR OPEN ALARM
ACC	0	CONDENSER CLEANING REMINDER (WEEKS)
IISM	NON	ENABLE SECOND PARAMETER SET
SB	YES	STANBY ENABLED
DS	NO	DOOR SWITCH INPUT ENABLED
LSM	NON	LIGHT CONTROL MODE
OAU	NON	AUX OUTPUT OPERATION
INP	SN4	TEMPERATURE TYPE
OS1	0	PROBE T1 OFFSET
T2	NO	PROBE T2 ENABLE
OS2	0	PROBE T2 OFFSET
TLD	1	DELAY FOR MIN TEMP AND MAX TEMP LOGGING
SIM	0	DISPLAY SLOWDOWN