

## Very Quiet/Low Velocity/Energy Efficient Cooler

**Air Defrost - 2,572 to 6,629 BTU/H Capacity**  
**Application - Vertical mounting, small to medium wine rooms**

Energy Efficient Vertical Rack Mount (VRM-EC) Evaporators are designed for installation in a corner of a wine room to unobtrusively provide quiet cooling. VRM Evaporators quietly supply refrigerated and humidity controlled air to medium and high temperature spaces, making them ideal for small to medium size wine rooms.

VRM-EC Evaporator units are available in capacities from 2,572 to 6,629 BTU's per hour and can be used with R-22, R134a, R404a or other refrigerants. Chilled water models are also available.

VRM-EC units have multiple doors that can be removed as needed for air intake and exhaust depending on how the unit is installed. Airflow through VRM-EC units can be adjusted to enable room humidity to be maintained within the required range.

Contact LRC's Application Engineers for more information.

- **Energy efficient EC motors meet or exceed California energy standards**
  - Thermally protected motors
  - Low noise design for minimum acoustical impact
  - Compact design allows for inconspicuous placement
  - Provides consistent room humidity by maintaining a steady coil temperature, reducing the need for expensive temperature and humidity controls in most applications.\*
- Contact LRC for details.

- Each coil pressure tested to over 380 psig for maximum system integrity
- High performance staggered coils, with copper tubing mechanically expanded into aluminum collared fins
- Rustproof all-aluminum cabinet. Flat black powder coated finish available. Call for details.
- Secondary drain pan standard
- Expansion and liquid line solenoid valve pre-installed
- Coil coated with LRCCoat™ anticorrosion coating
- Drainpan made of non-corrosive material

### Options Available☐ Call for details

- Copper coils and /or stainless steel cabinets available for harsh environments
- Pre-charged, custom or OEM units can be made to your order

Our Application Engineers can help you design the system you need. Call us today, 562-944-1969, and we'll help you get the right LRC product for your project.

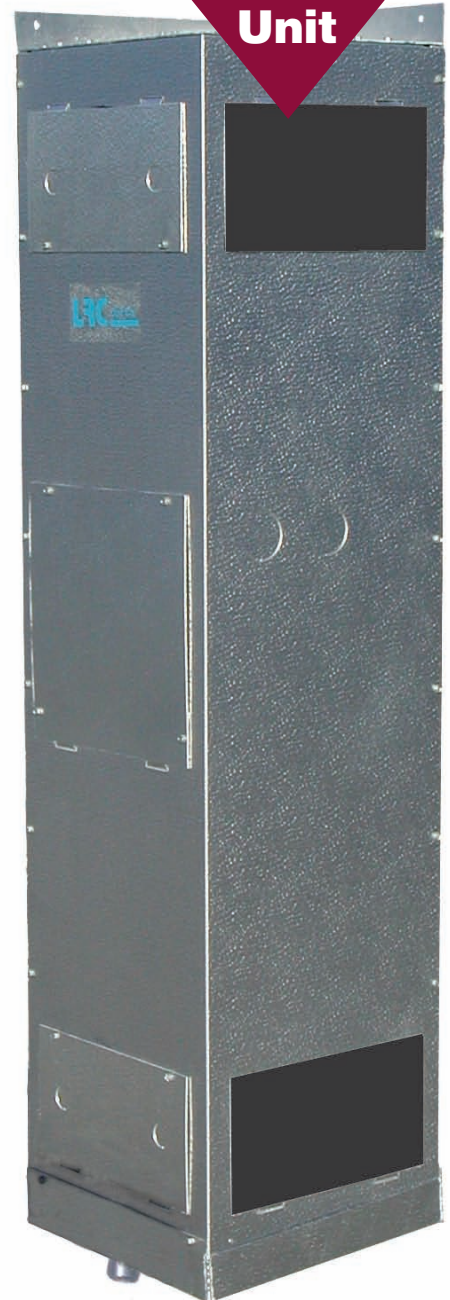
**Visit [www.lrccoil.com](http://www.lrccoil.com) for installation and maintenance data, and wiring diagrams.**

### OUR UNCONDITIONAL GUARANTEE

We're proud of the workmanship that goes into every LRC product. Because of our exacting design and manufacturing standards, and our thorough testing prior to shipping, we unconditionally guarantee our products to be free from manufacturing defects for one year. You can count on LRC Coil for quality heat transfer products.

© LRC Coil Company 2018

**Extremely  
Quiet  
Unit**



At LRC, we are continuously working to improve our products, therefore, we reserve the right to make changes without notice.

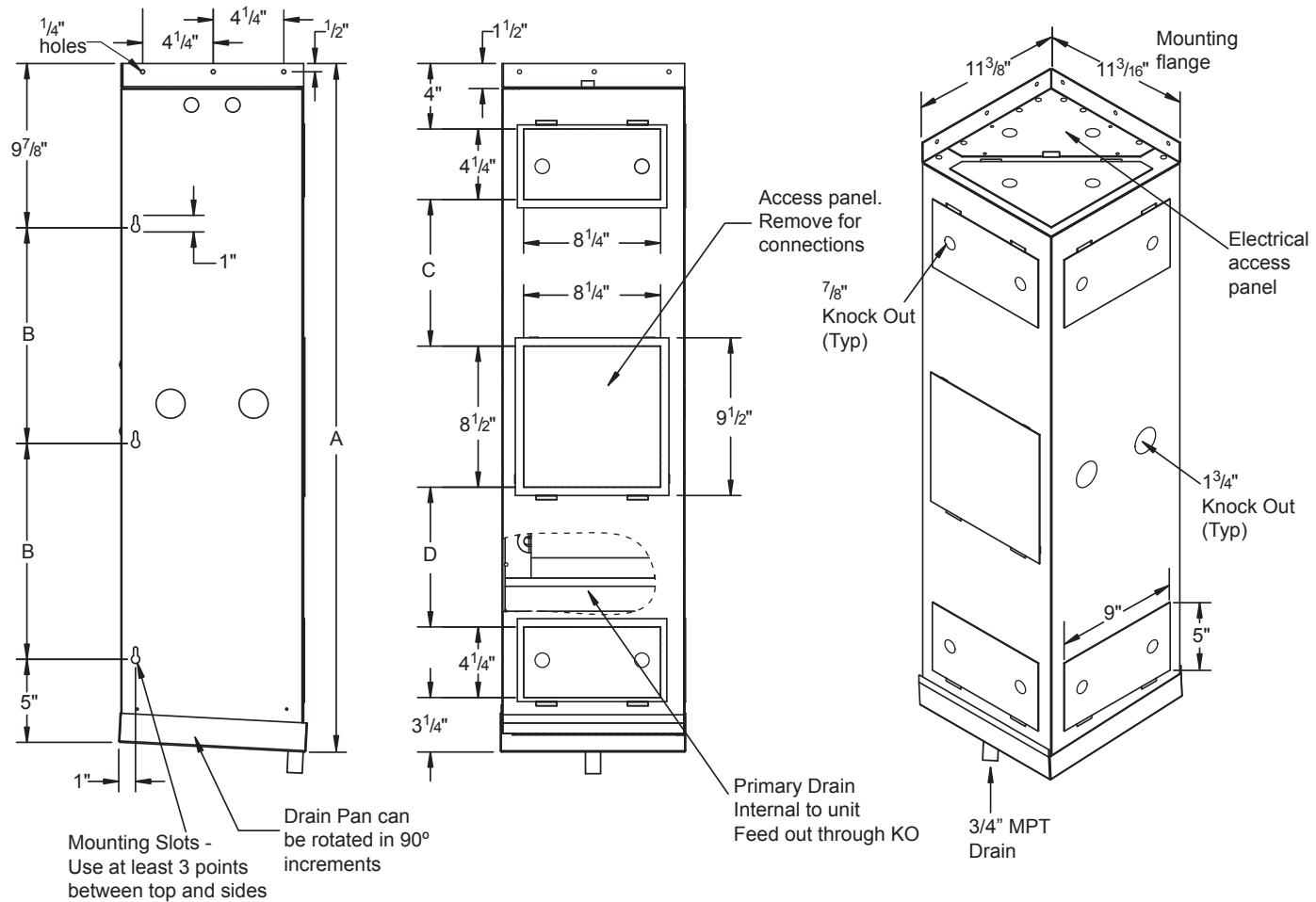


WARNING: The only harmful routes of exposure for this product is through inhalation and ingestion of this product. THIS PRODUCT IS NOT DESIGNED OR MEANT TO BE INHALED OR INGESTED. The only route of exposure that this product is meant for is dermal exposure (skin contact). Consumers face no significant risk to chemicals that are known to the State of California to cause cancer and/or reproductive harm from dermal exposure to this product. For more information, go to [www.Prop65Warning.ca.gov](http://www.Prop65Warning.ca.gov).

\* = Assumes areas surrounding the humidity controlled room are maintained to ASHRAE conditions of 80°/67°. For humidity controlled rooms with different surrounding conditions, please contact LRC.

**Energy efficient EC motors meet California energy regulations for refrigeration.**

All measurements are in inches.



**Vertical Rack Mount (VRM-EC) Specifications**

Model No.	115V Amps	CFM	BTUH Cap. @ 17°F TD 38°F SST, 55°F EAT		
			R-513A	R134a	R404a
VRM-25EC	1.25	220	2,642	2,572	2,604
VRM-35EC	1.25	260	3,316	3,228	3,492
VRM-50EC	1.25	335	4,675	4,550	4,815
VRM-65EC	1.25	420	6,678	6,500	6,597

Please note:

- LRC cooling units are designed to minimize noise and vibration. To reduce/eliminate amplification of existing noise or vibration, extreme care must be taken during installation. Please refer to supplied installation instructions and use proper installation materials to minimize acoustic impact.
- The use of oversized condensing units can lead to poor wine room evaporator performance and possible system failure. When installing a LRC wine room evaporator, it is recommended that condensing units be sized LESS than or equal to the evaporator capacity. Contact LRC Coil's Application Engineers at 562-944-1969 for assistance.
- LRC recommends evaporator maintenance access is designed into every wine room installation.

**Vertical Rack Mount (VRM-EC) Physical Data**

Model No.	Dimensions				Connections		Unit Wt.
	A	B	C	D	Liq.	Suct.	
VRM-25EC	41 1/2	13	8 13/16	8 7/16	3/8	3/8	48
VRM-35EC	45 1/2	15	9 5/16	11 15/16	3/8	3/8	50
VRM-50EC	47 1/2	16	9 5/16	13 15/16	3/8	1/2	59
VRM-65EC	51 1/2	18	10	15 1/4	3/8	1/2	63

Expansion valve and liquid line solenoid valve standard  
For air flow into and out of the unit, at least one access door must be removed from each end.

Custom configurations available; call factory for details.

Our website has a Wine Room Capacity Calculator that instantly determines room loads and capacities, enabling you to know cooling equipment requirements based on your exact specifications. Visit [LRCCoil.com](http://LRCCoil.com) for details.

Our Application Engineers can help you design the system you need. Call us today, 562-944-1969, and we'll help you get the right LRC product for your project.